

Figure 1: 0313 — 118: Ar PG3000 GR = 32.370 AR = 64.766 $\lambda\lambda = 3141 - 3955$

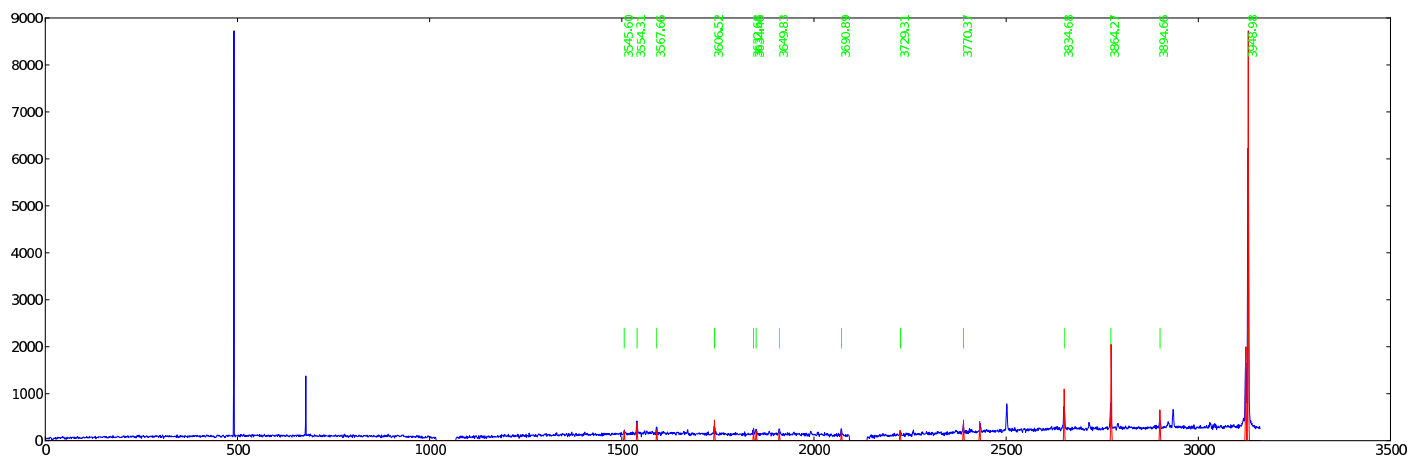


Figure 2: 0926 — 048: Ar PG3000 GR = 33.127 AR = 66.255 $\lambda\lambda = 3215 - 4022$

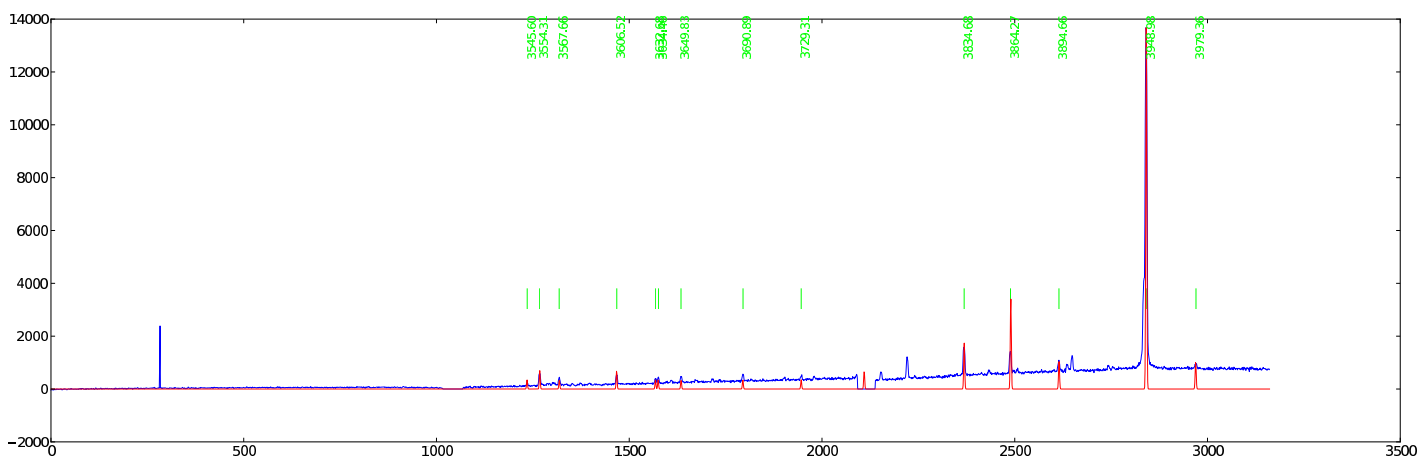


Figure 3: 0816 — 052: Ar PG3000 GR = 38.375 AR = 76.766 $\lambda\lambda = 3731 - 4494$

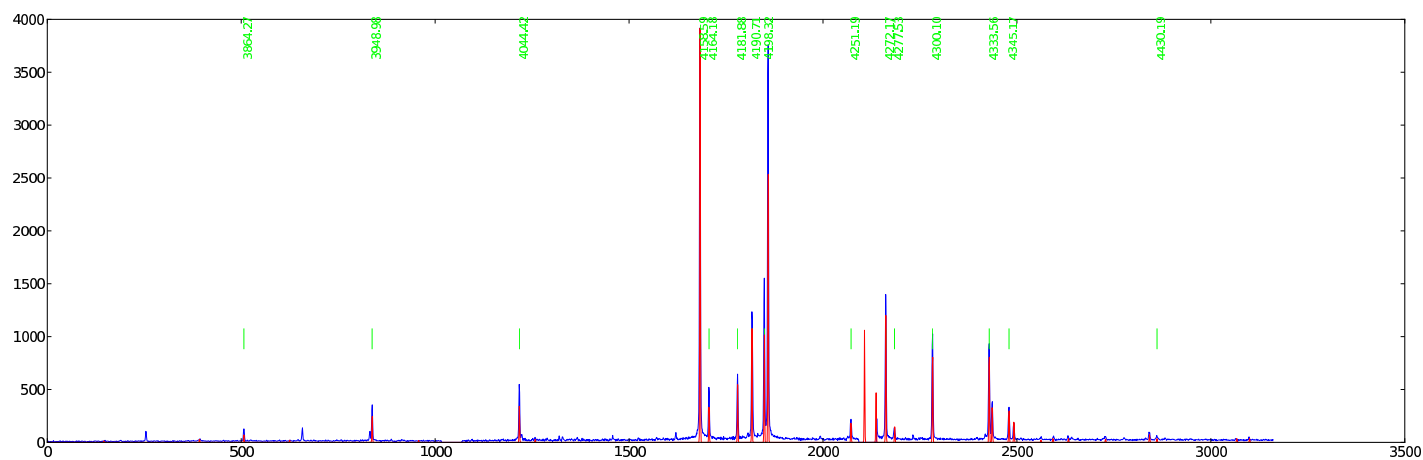


Figure 4: 1111 — 124: Ar PG3000 GR = 39.127 AR = 78.264 $\lambda\lambda = 3805 - 4558$

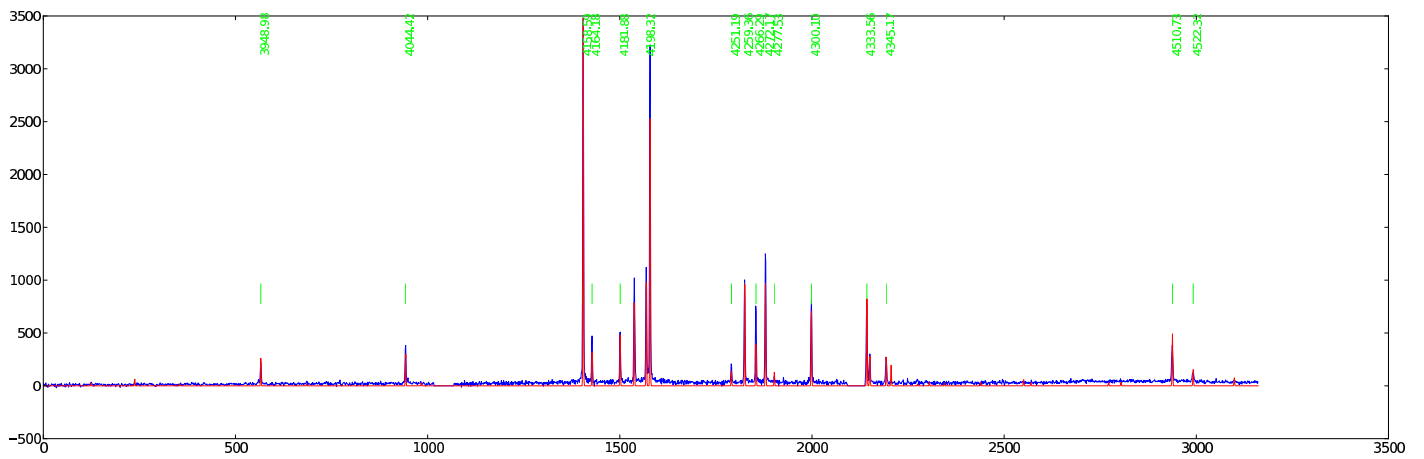


Figure 5: 0212 — 003: Ar PG3000 GR = 39.127 AR = 78.270 $\lambda\lambda = 3805 - 4558$

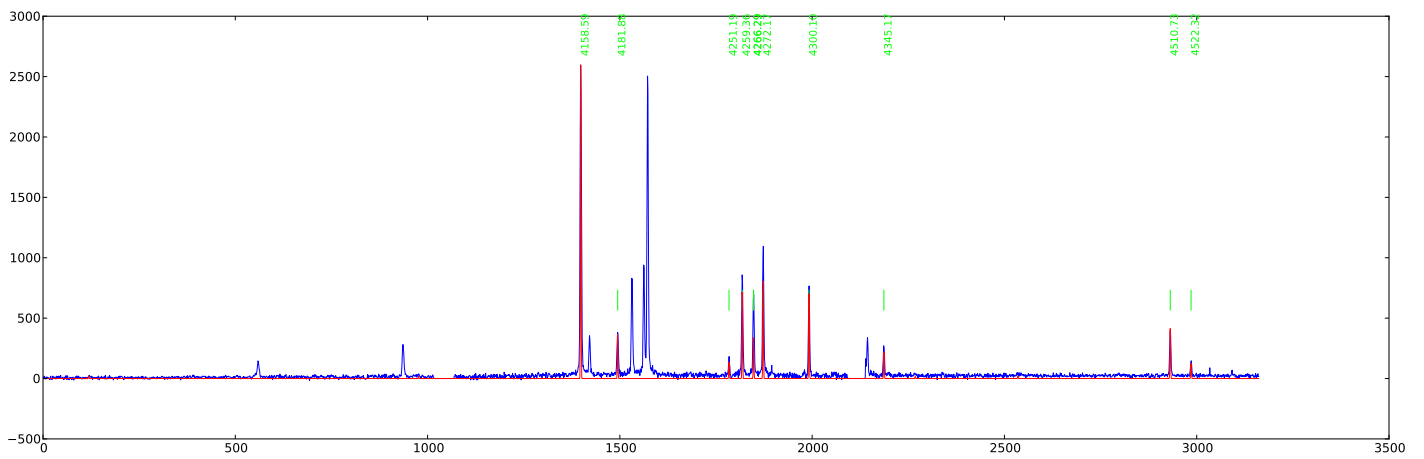


Figure 6: 1114 — 108: Ar PG3000 GR = 39.500 AR = 79.012 $\lambda\lambda = 3837 - 4588$

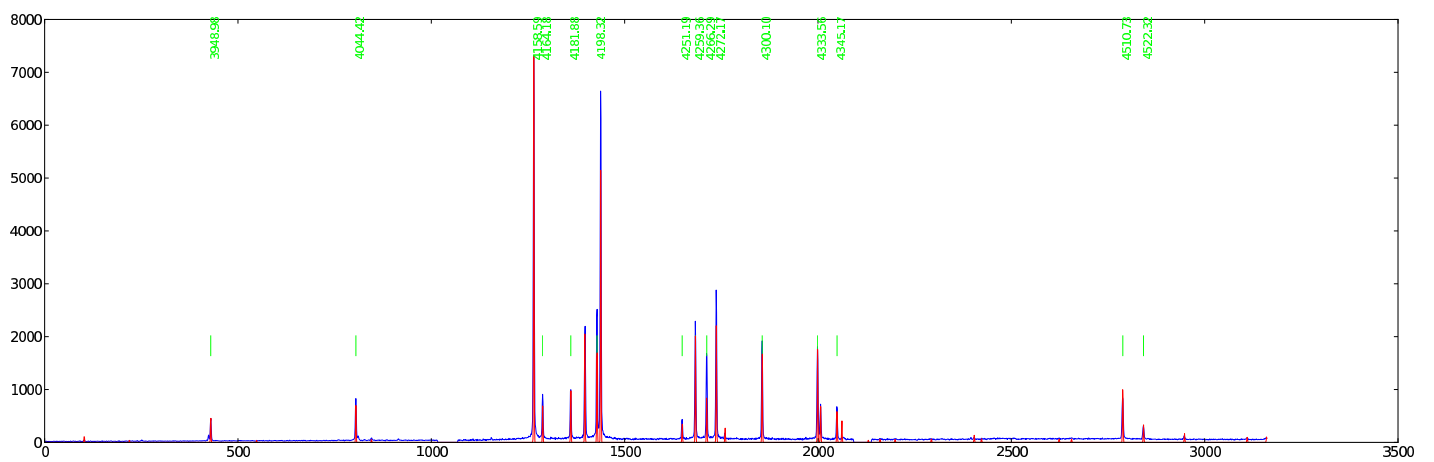


Figure 7: 1110 — 014: Ar PG3000 GR = 40.625 AR = 81.263 $\lambda\lambda = 3943 - 4682$

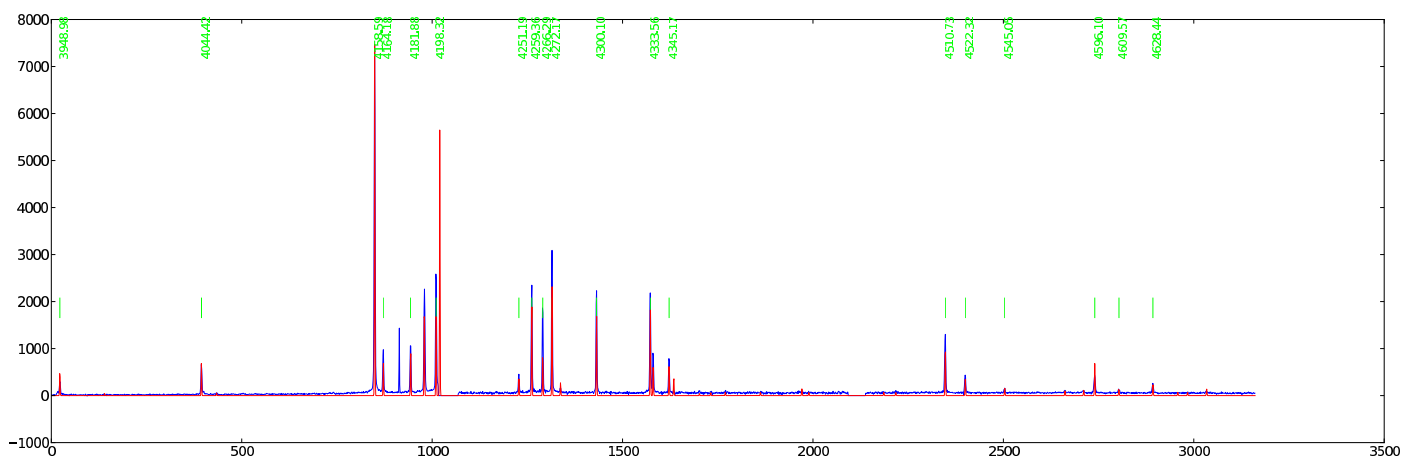


Figure 8: 0816 — 040: Ar PG3000 GR = 44.750 AR = 89.509 $\lambda\lambda = 4316 - 5012$

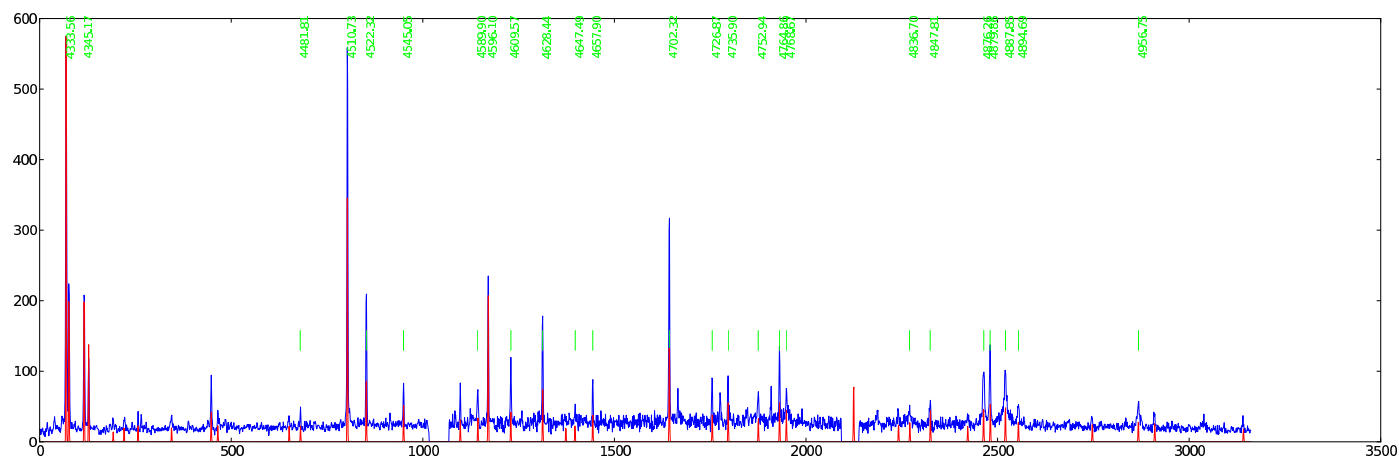


Figure 9: 0816 — 066: Ar PG3000 GR = 46.627 AR = 93.260 $\lambda\lambda = 4479 - 5153$

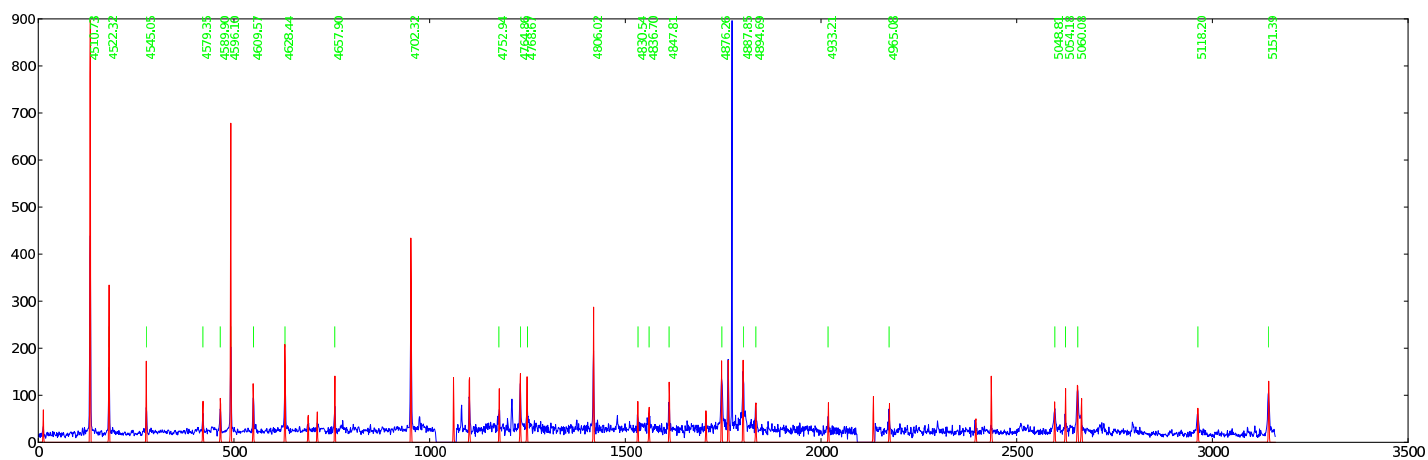


Figure 10: 0212 — 121: Ar PG3000 GR = 40.627 AR = 81.271 $\lambda\lambda = 3943 - 4885$

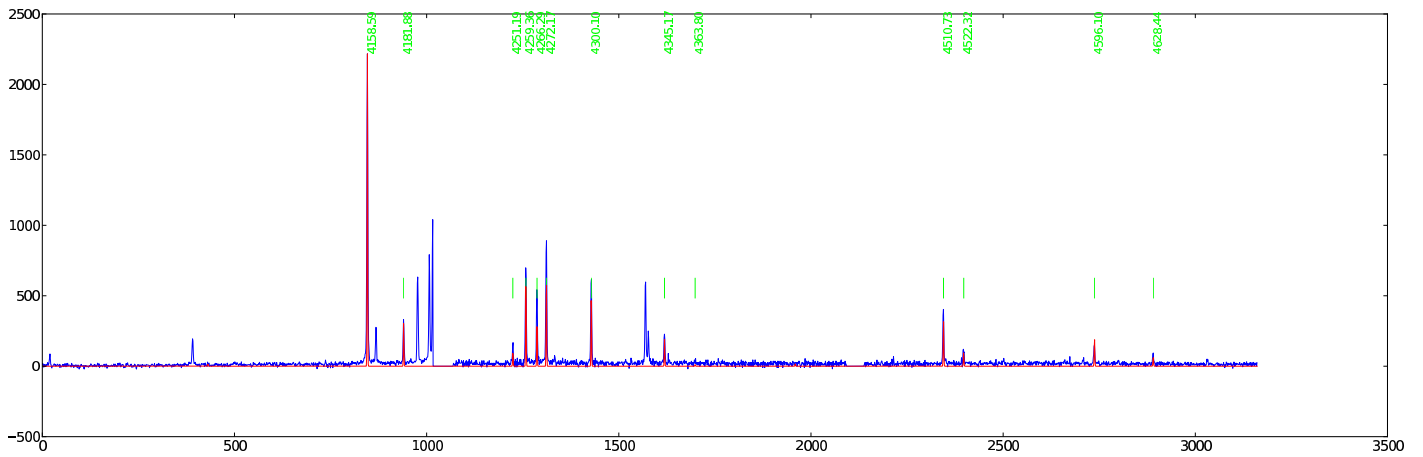


Figure 11: 0925 — 030: Ar PG3000 GR = 50.002 AR = 100.009 $\lambda\lambda = 4758 - 5393$

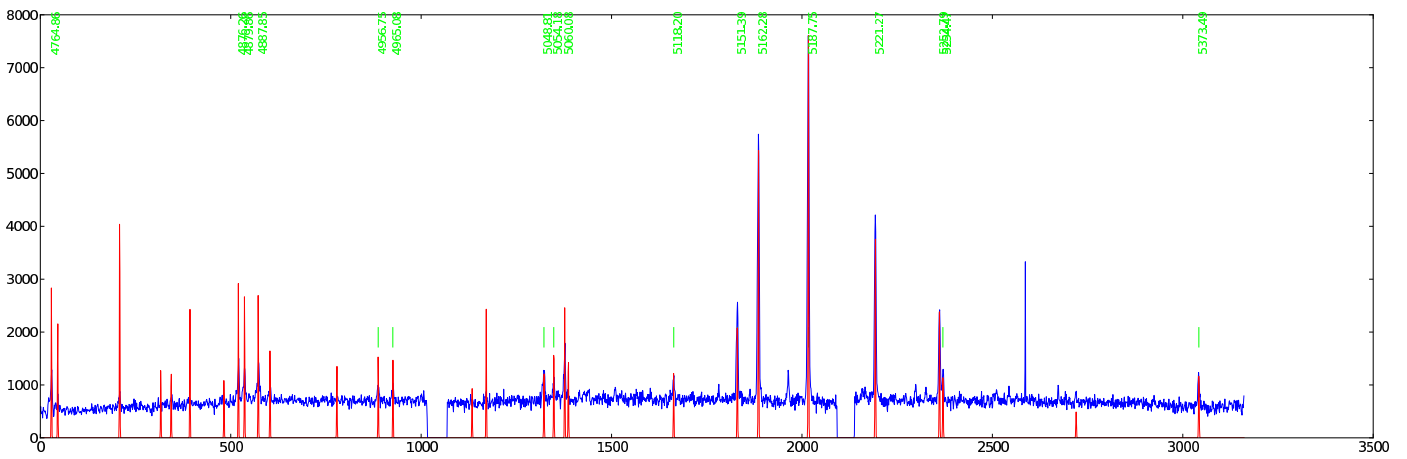


Figure 12: 0815 — 082: Ar PG2300 GR = 30.500 AR = 61.007 $\lambda\lambda = 3840 - 4924$

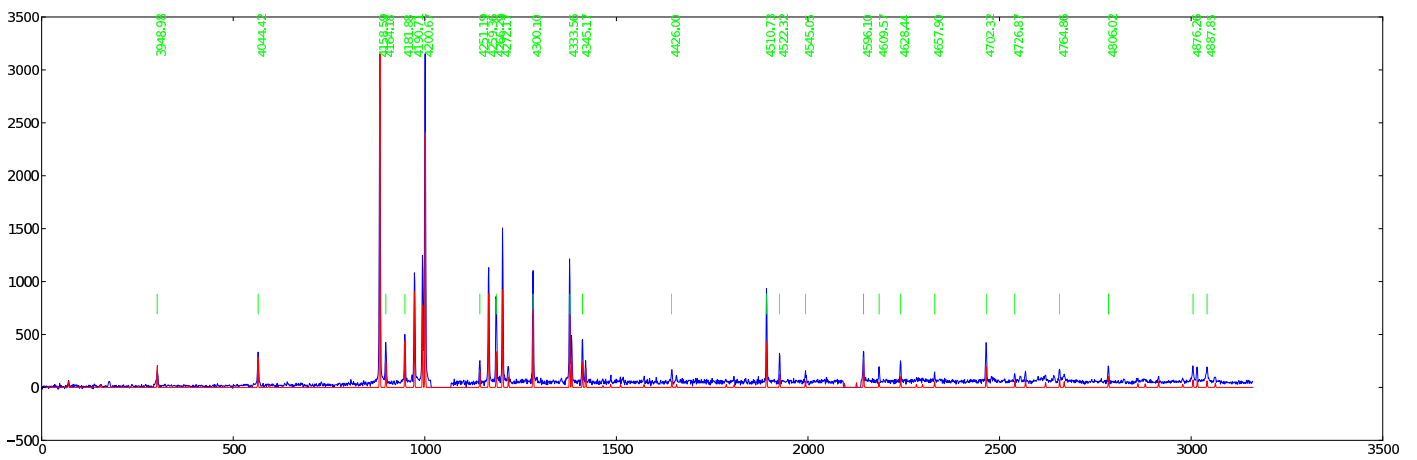


Figure 13: 0318 — 097: Ar PG2300 GR = 32.375 AR = 64.756 $\lambda\lambda = 4090 - 5156$

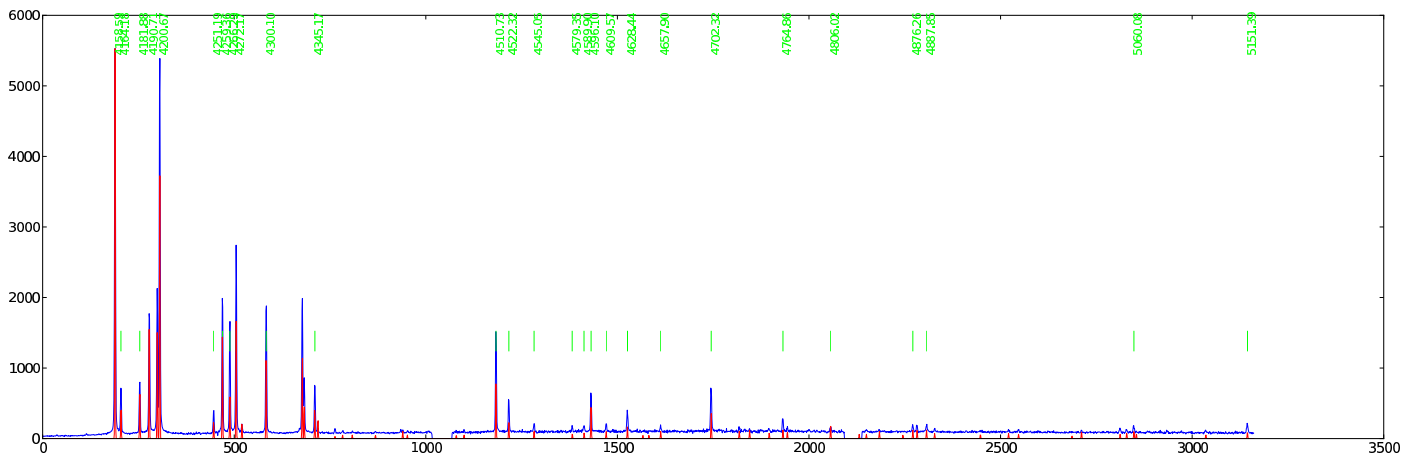


Figure 14: 0219 — 040: Ar PG2300 GR = 35.002 AR = 70.005 $\lambda\lambda = 4435 - 5469$

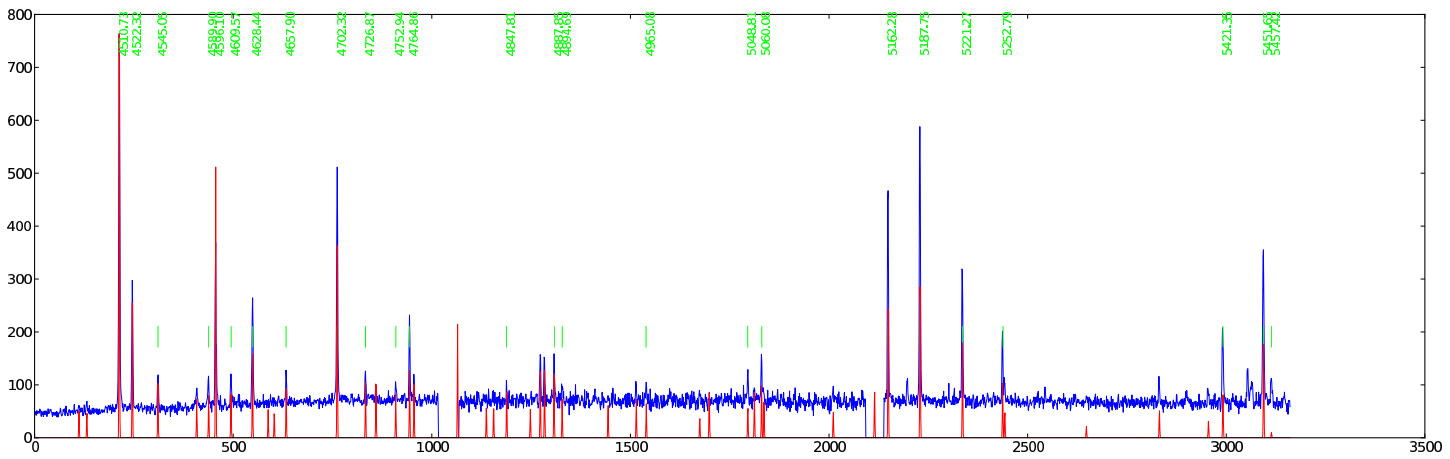


Figure 15: 0216 — 193: Ar PG2300 GR = 35.002 AR = 70.002 $\lambda\lambda = 4435 - 5469$

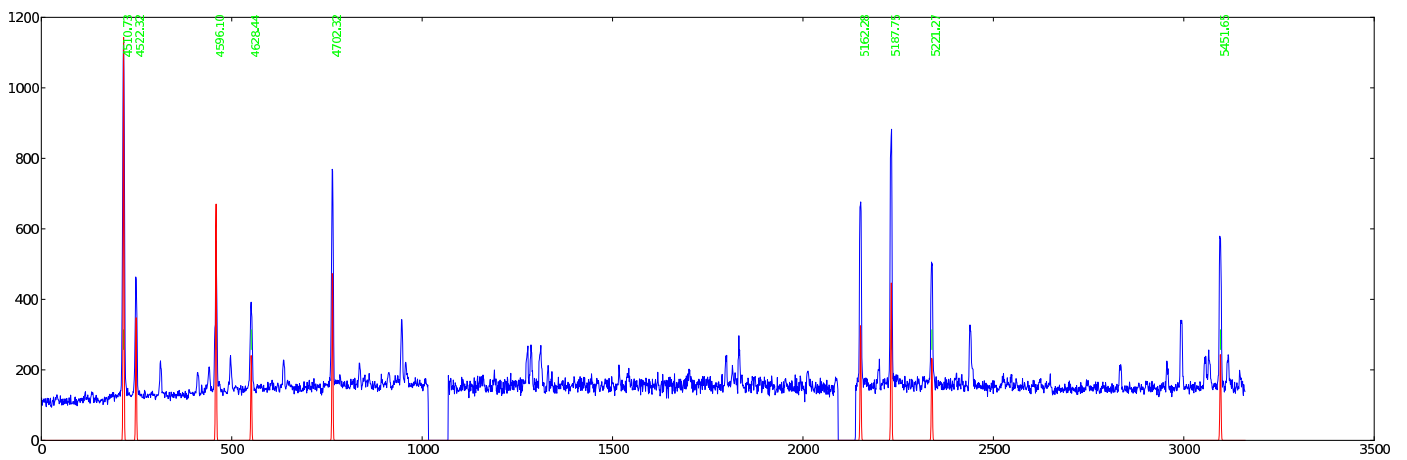


Figure 16: 0219 — 040: Ar PG2300 GR = 35.002 AR = 70.005 $\lambda\lambda = 4437 - 5469$

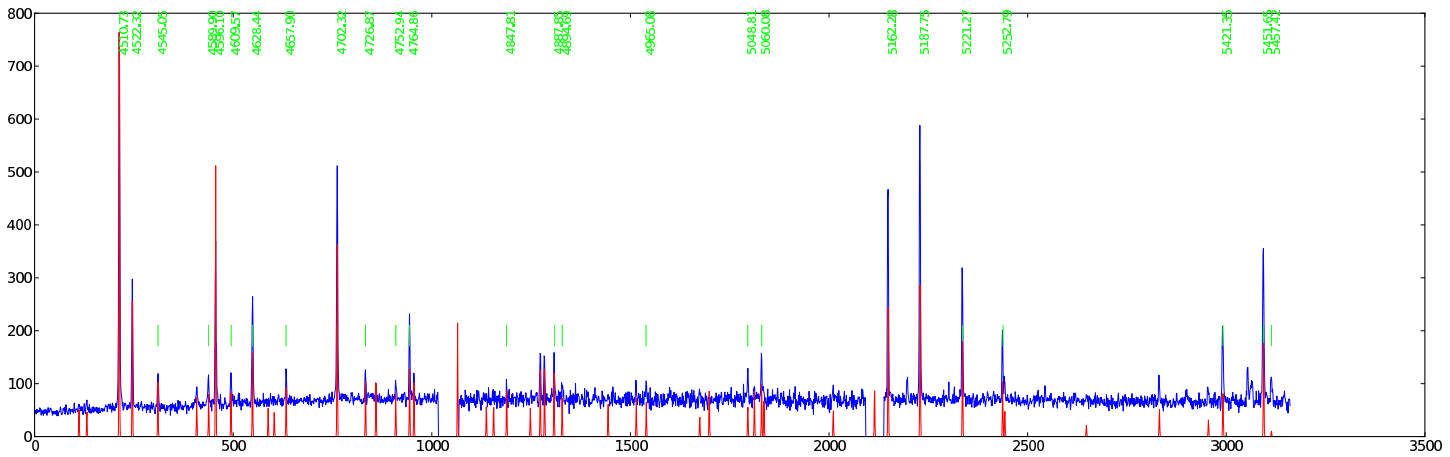


Figure 17: 0219 — 050: Ar PG2300 GR = 35.002 AR = 70.012 $\lambda\lambda = 4436 - 5469$

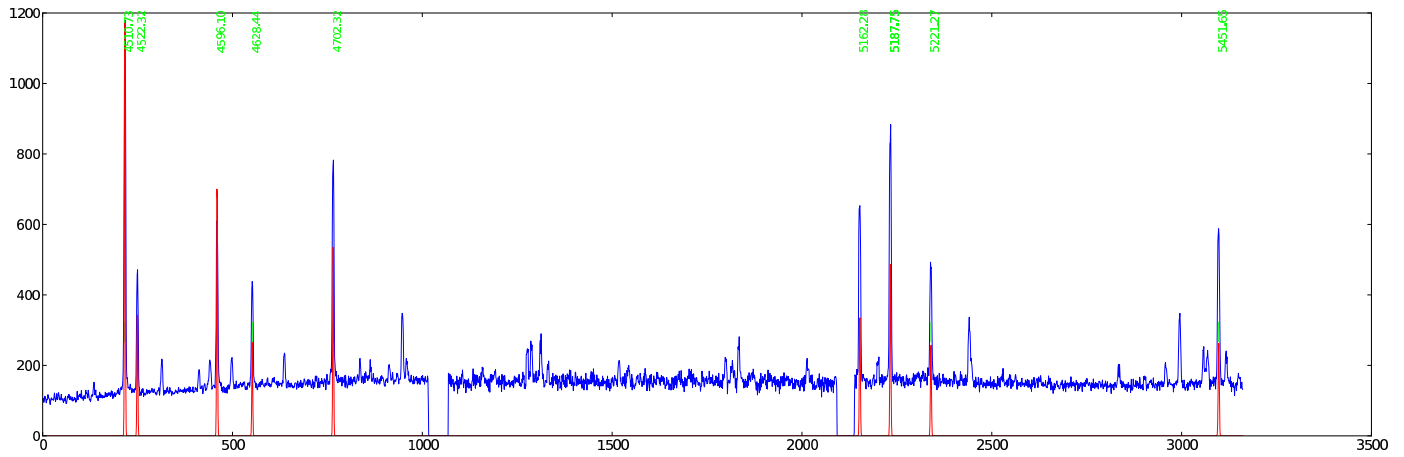


Figure 18: 0221 — 022: Ar PG2300 GR = 35.002 AR = 70.007 $\lambda\lambda = 4433 - 5470$

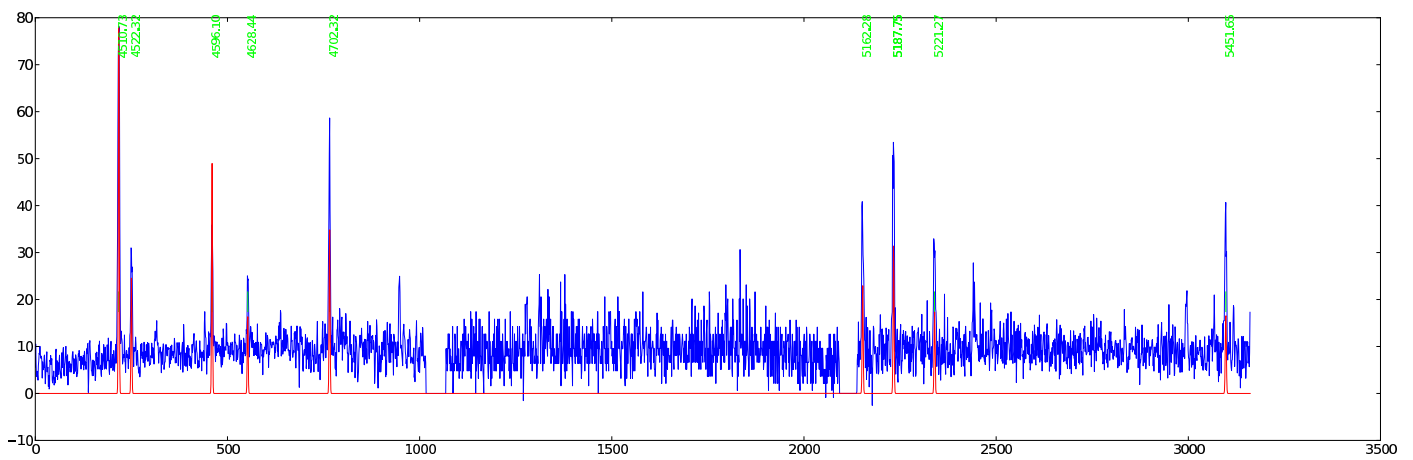


Figure 19: 0920 — 051: Ar PG2300 GR = 37.250 AR = 74.506 $\lambda\lambda = 4722 - 5728$

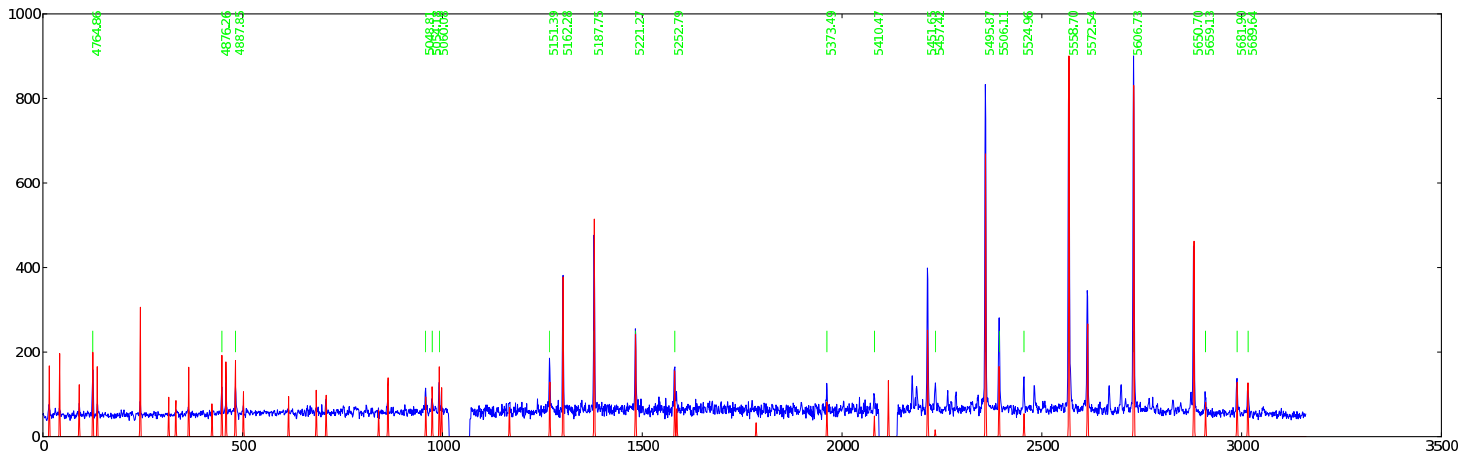


Figure 20: 0920 — 045: Ar PG2300 GR = 40.625 AR = 81.264 $\lambda\lambda = 5141 - 6105$

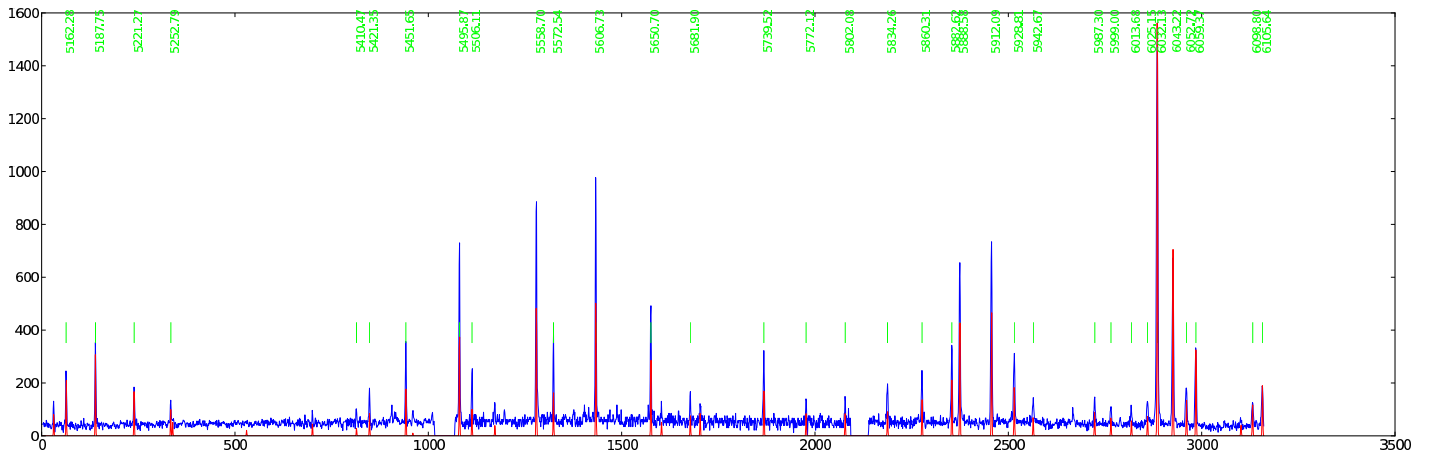


Figure 21: 0917 — 089: Ar PG2300 GR = 42.875 AR = 85.772 $\lambda\lambda = 5410 - 6343$

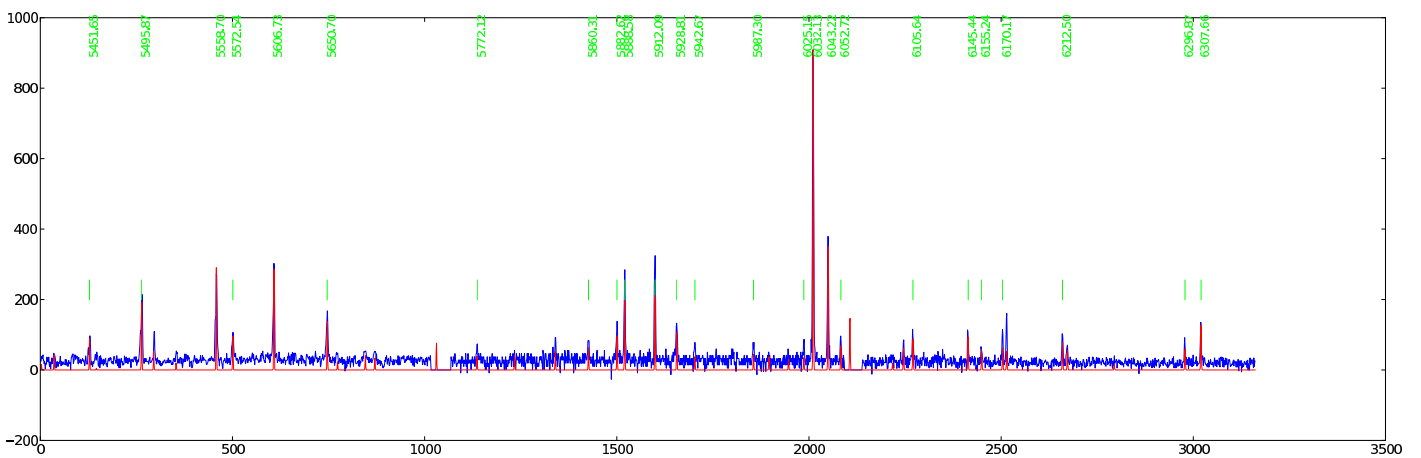


Figure 22: 1114 — 115: Ar PG2300 GR = 45.127 AR = 90.262 $\lambda\lambda = 5670 - 6570$

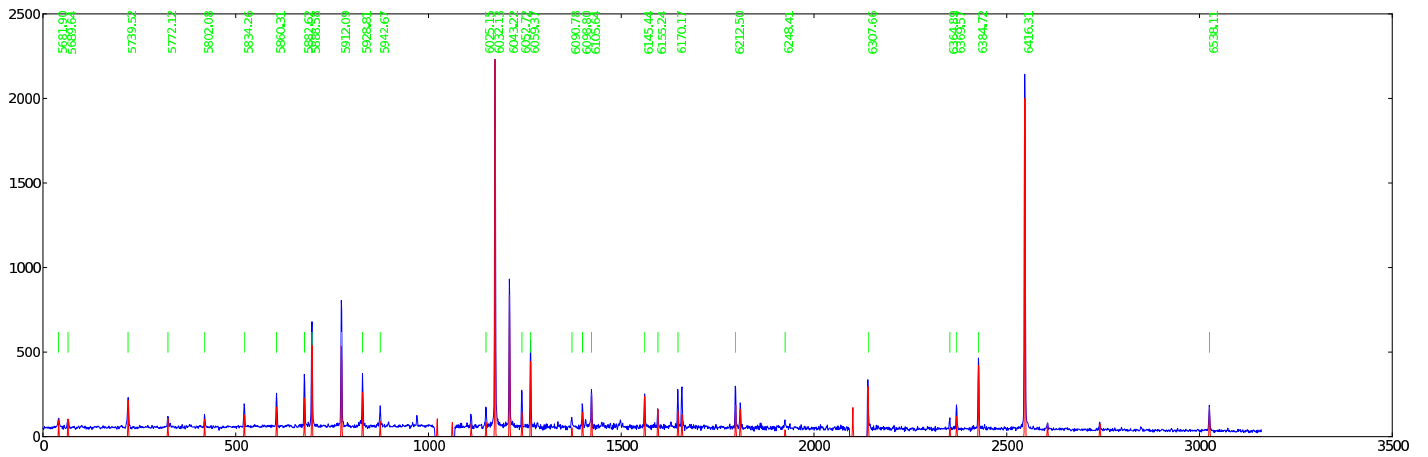


Figure 23: 1020 — 426: Ar PG2300 GR = 47.000 AR = 91.771 $\lambda\lambda = 5742 - 6651$

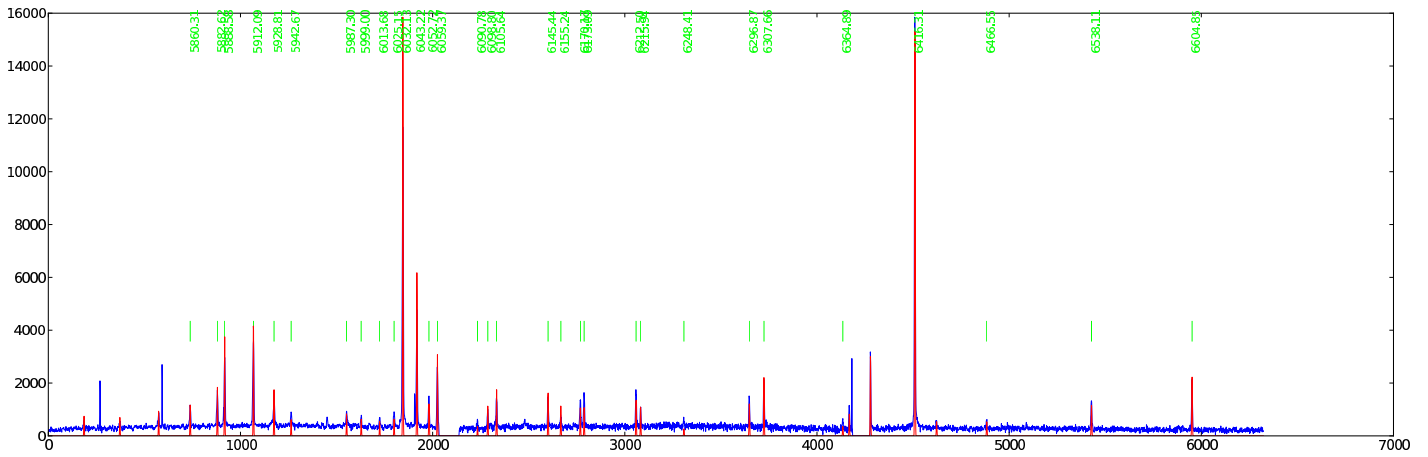


Figure 24: 0106 — 271: Ar PG2300 GR = 48.873 AR = 97.763 $\lambda\lambda = 6053 - 6928$

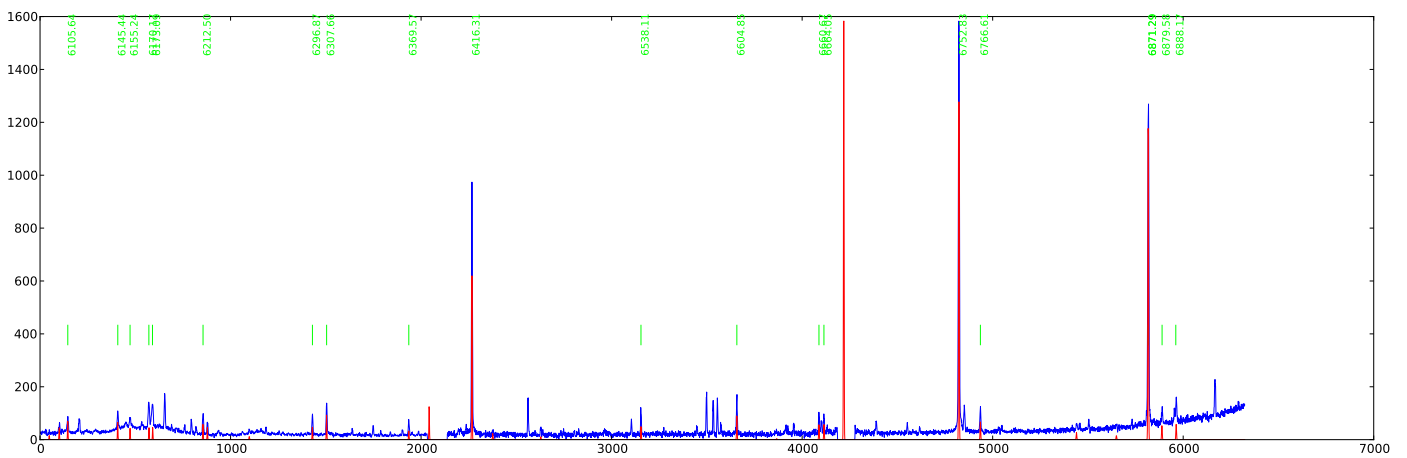


Figure 25: 0106 — 300: Ar PG2300 GR = 48.875 AR = 97.761 $\lambda\lambda = 6053 - 6930$

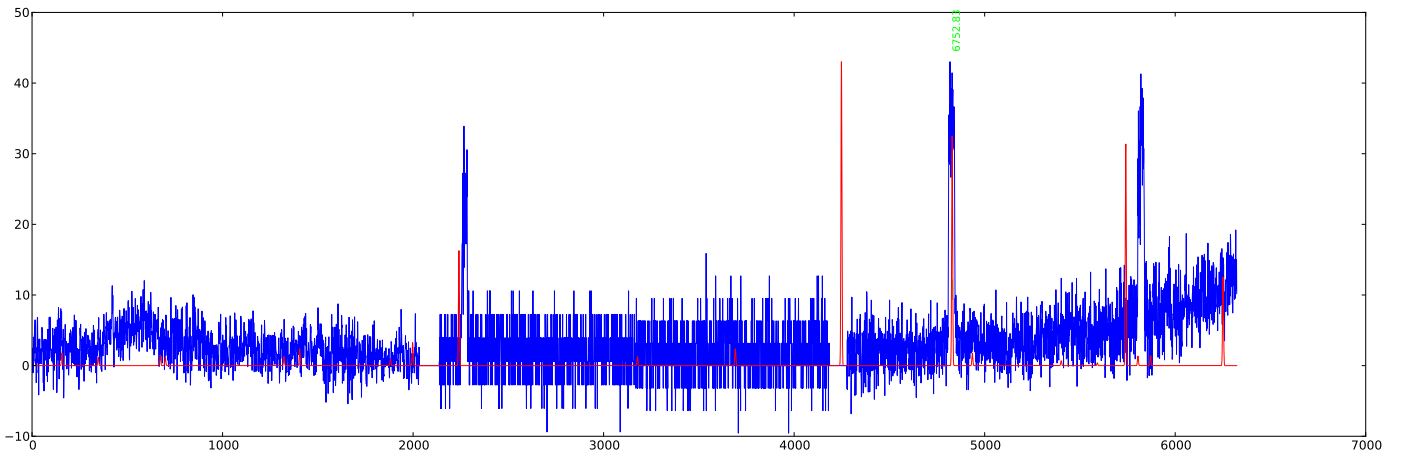


Figure 26: 0106 — 301: Ar PG2300 GR = 48.875 AR = 97.761 $\lambda\lambda = 6053 - 6930$

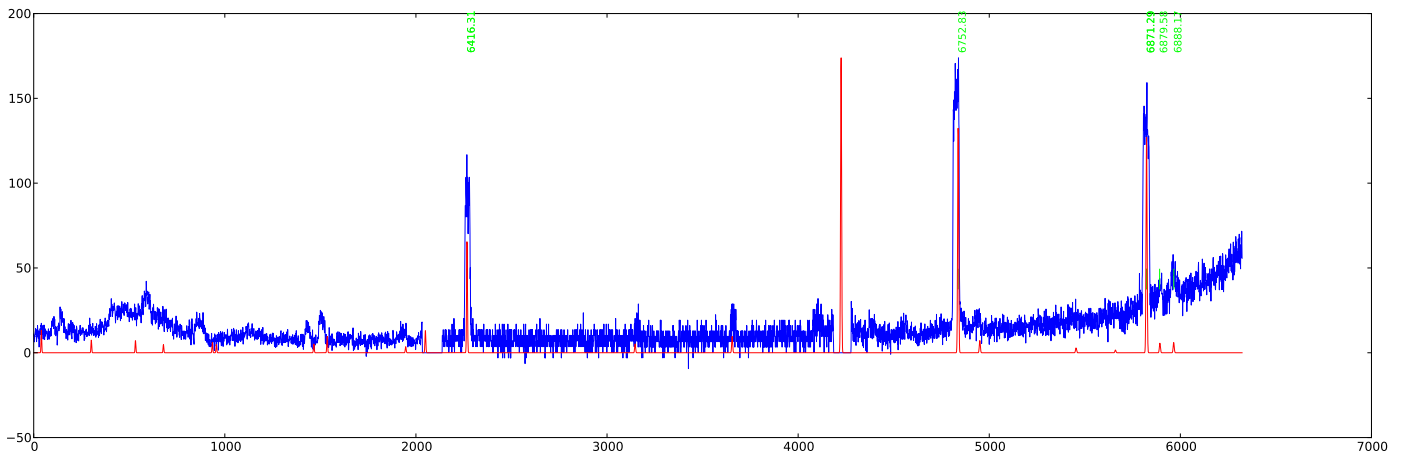


Figure 27: 0909 — 003: Ar PG2300 GR = 48.877 AR = 97.760 $\lambda\lambda = 6086 - 6928$

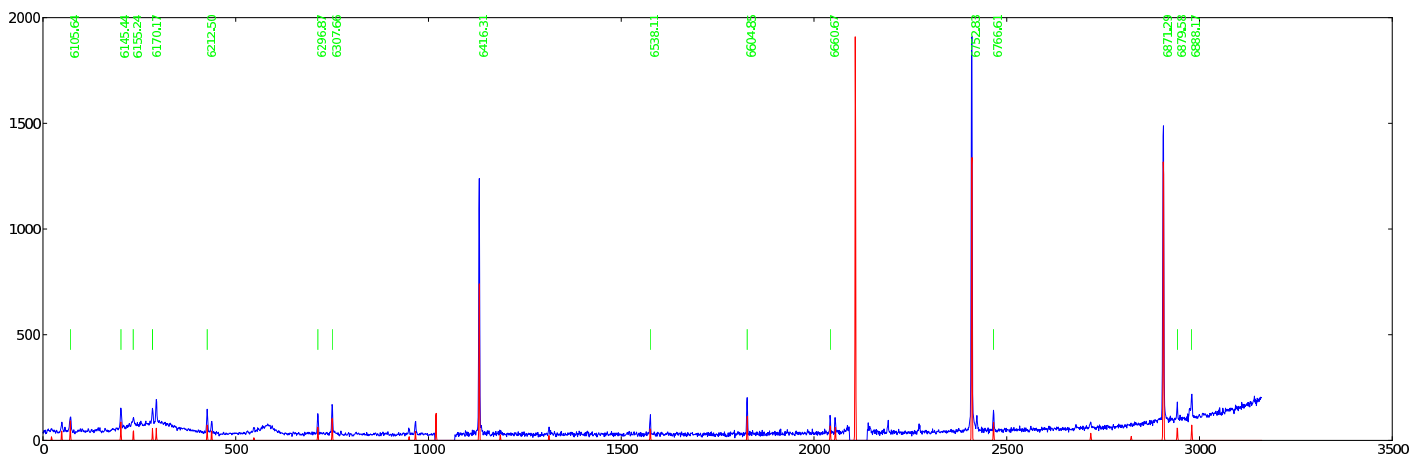


Figure 28: 0909 — 004: Ar PG2300 GR = 48.877 AR = 97.760 $\lambda\lambda = 6085 - 6928$

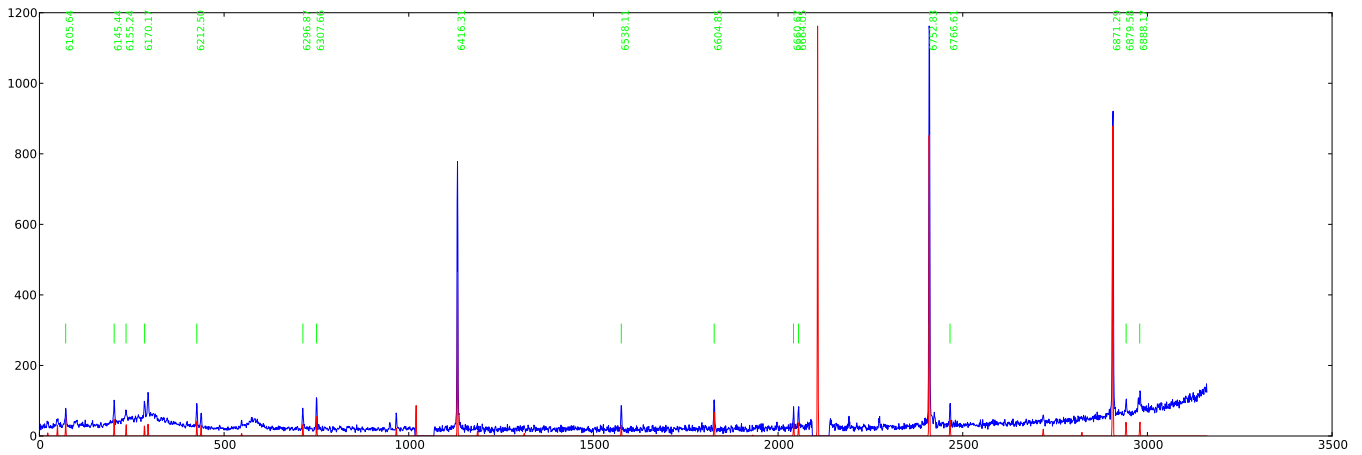


Figure 29: 1217 — 017: Ar PG1800 GR = 27.875 AR = 55.754 $\lambda\lambda = 4445 - 5868$

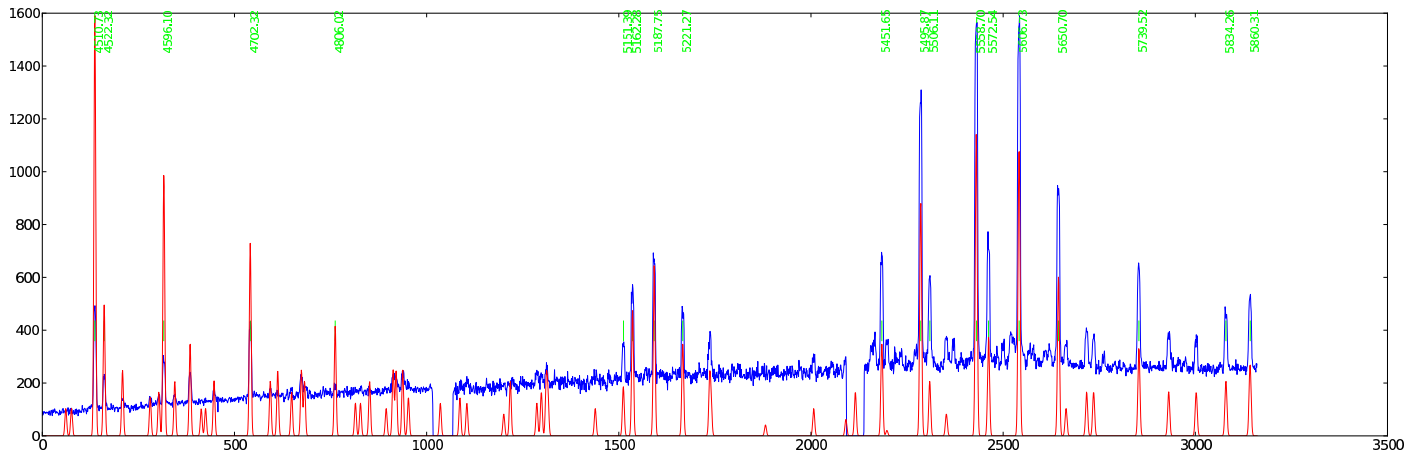


Figure 30: 0923 — 030: Ar PG1800 GR = 28.258 AR = 56.509 $\lambda\lambda = 4511 - 5926$

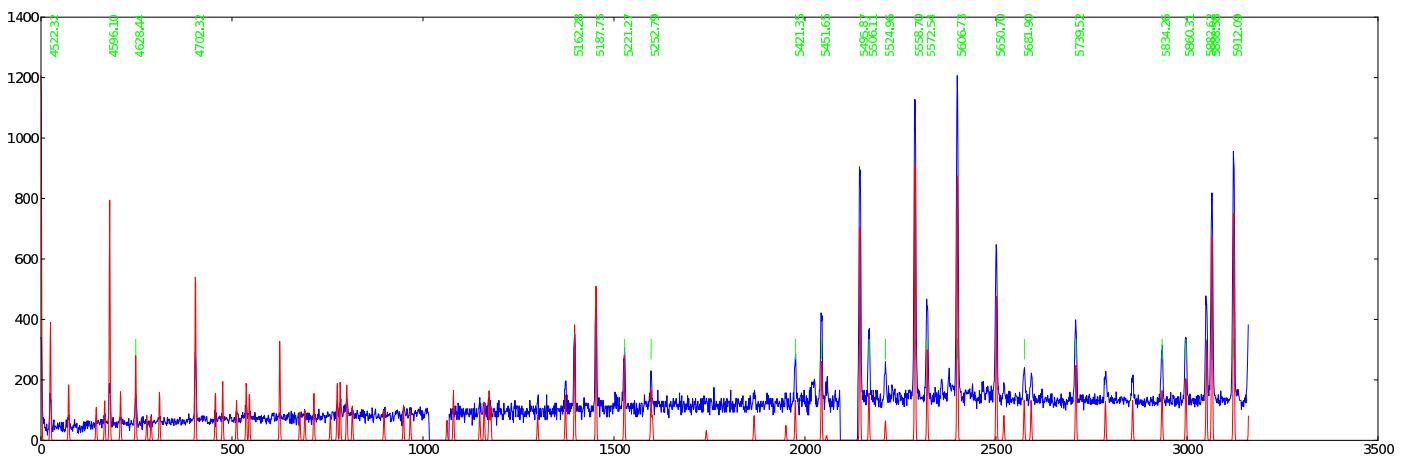


Figure 31: 0319 — 006: Ar PG1800 GR = 30.125 AR = 60.258 $\lambda\lambda = 4842 - 6230$

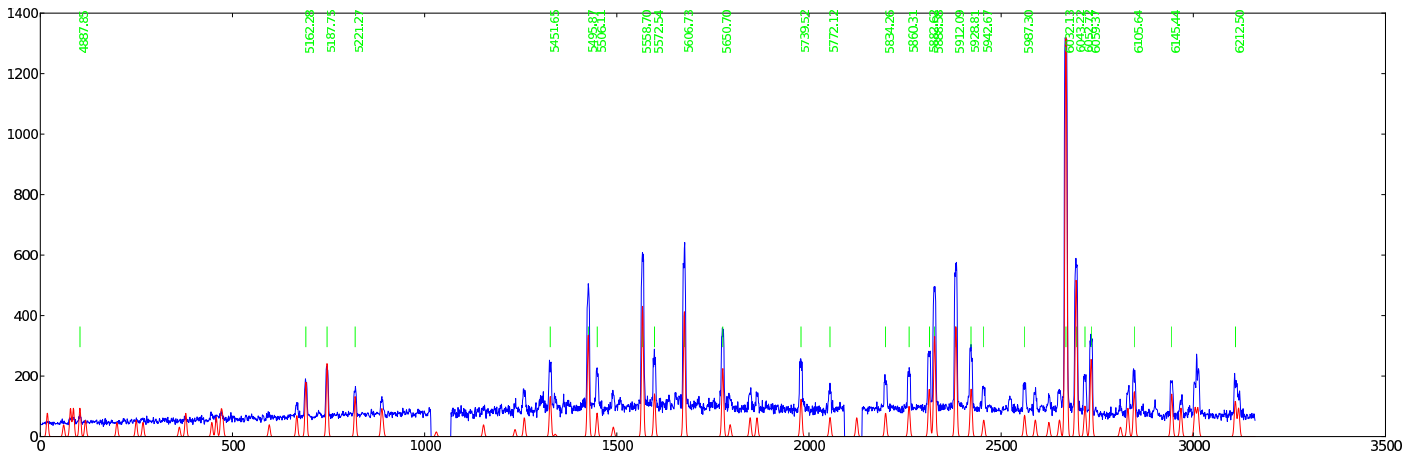


Figure 32: 1225 — 026: Ar PG1800 GR = 31.625 AR = 63.257 $\lambda\lambda = 5097 - 6469$

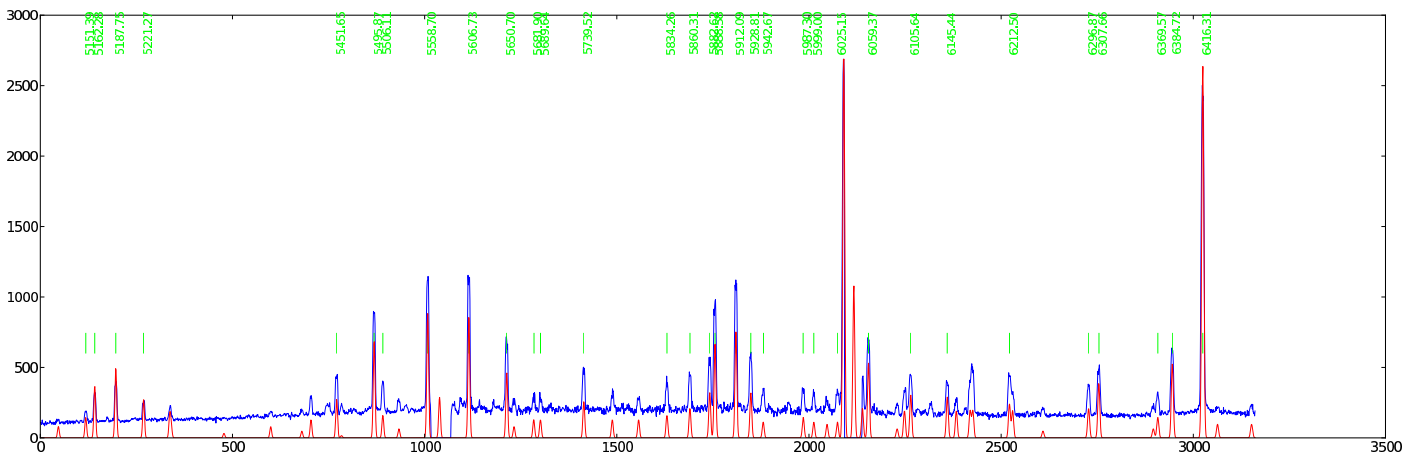


Figure 33: 0226 — 045: Ar PG1800 GR = 34.625 AR = 69.258 $\lambda\lambda = 5595 - 6930$

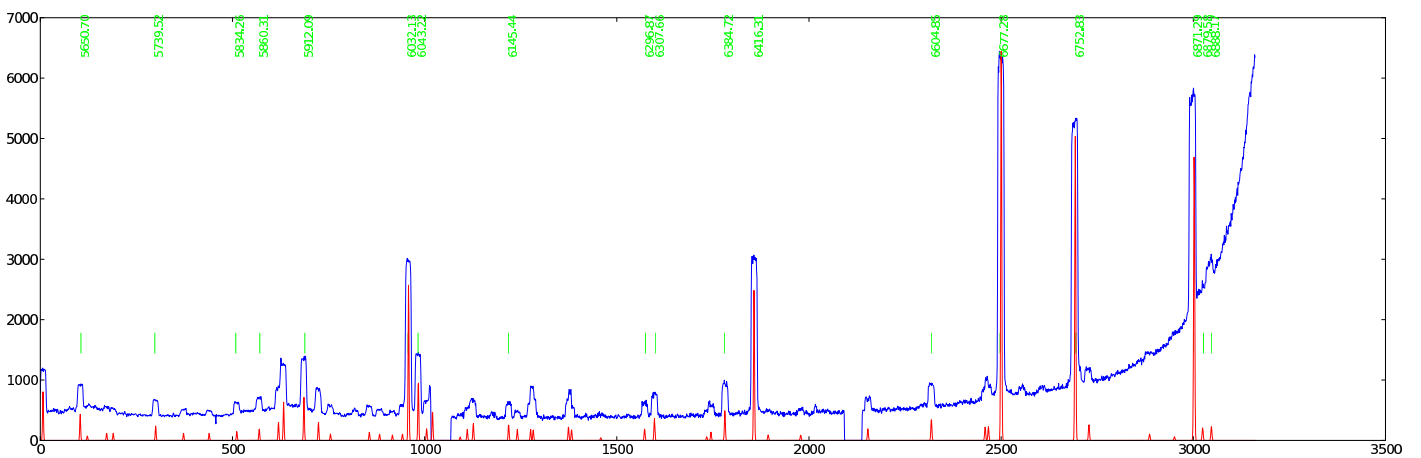


Figure 34: 0122 — 036: Ar PG1800 GR = 48.127 AR = 96.271 $\lambda\lambda = 7670 - 8764$

