

Figure 1: 0825 — 015: HgAr PG3000 GR = 28.250 AR = 61.763 $\lambda\lambda = 2998 - 3795$

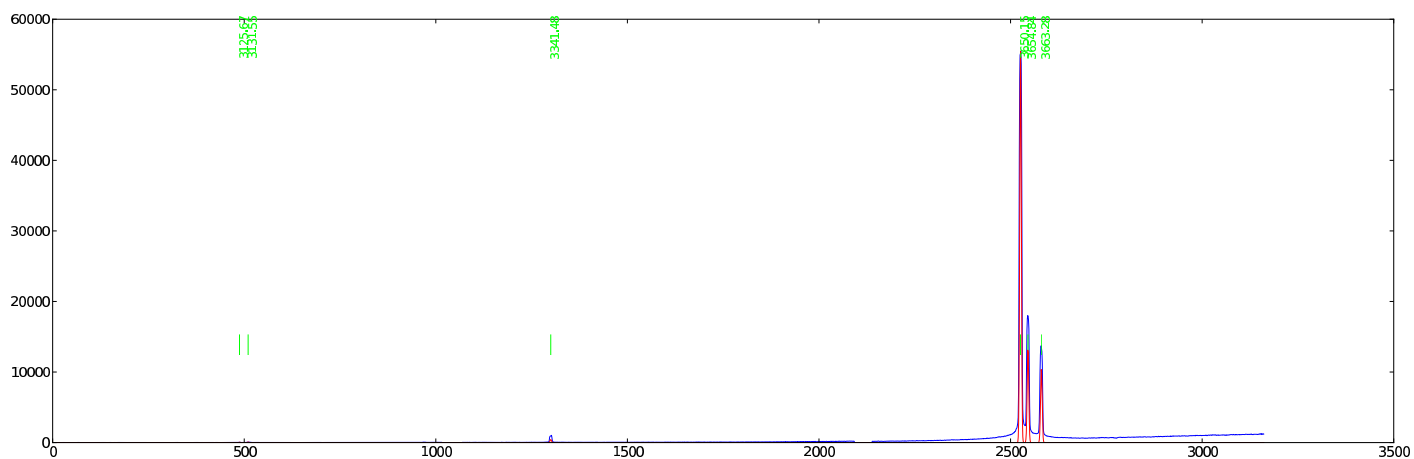


Figure 2: 0825 — 015 (zoom): HgAr PG3000 GR = 28.250 AR = 61.763 $\lambda\lambda = 2998 - 3795$

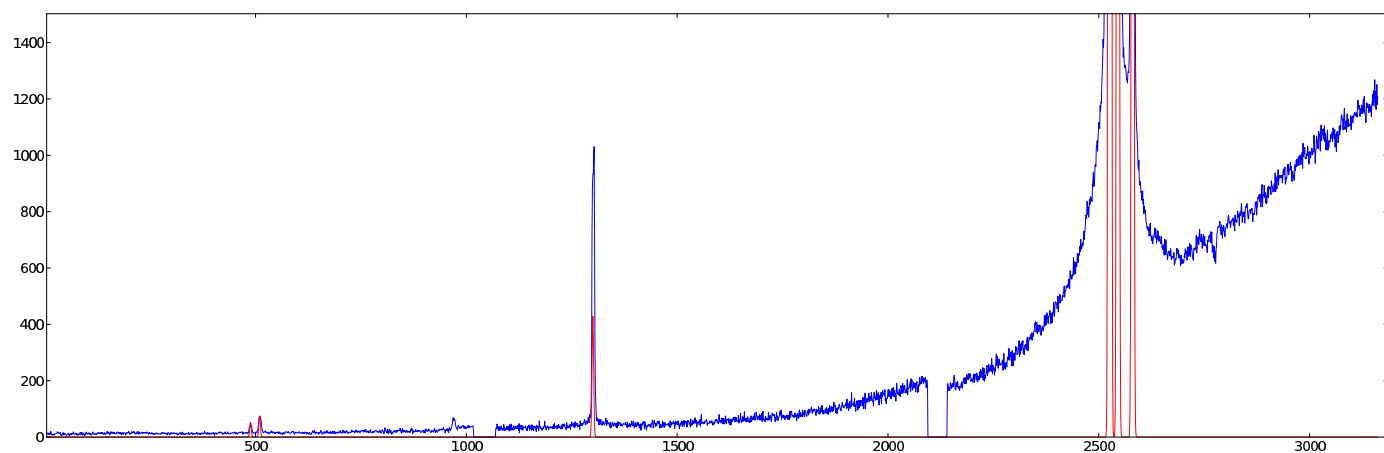


Figure 3: 0816 — 054: HgAr PG3000 GR = 32.375 AR = 64.754 $\lambda\lambda = 3111 - 3996$

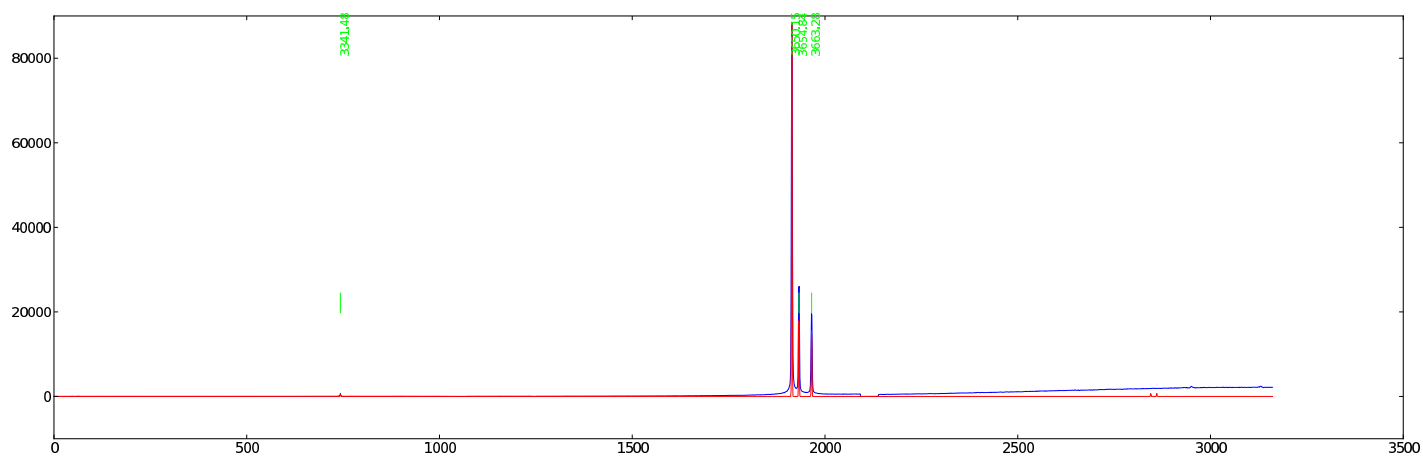


Figure 4: 0816 — 054 (zoom): HgAr PG3000 GR = 32.375 AR = 64.754 $\lambda\lambda = 3111 - 3996$

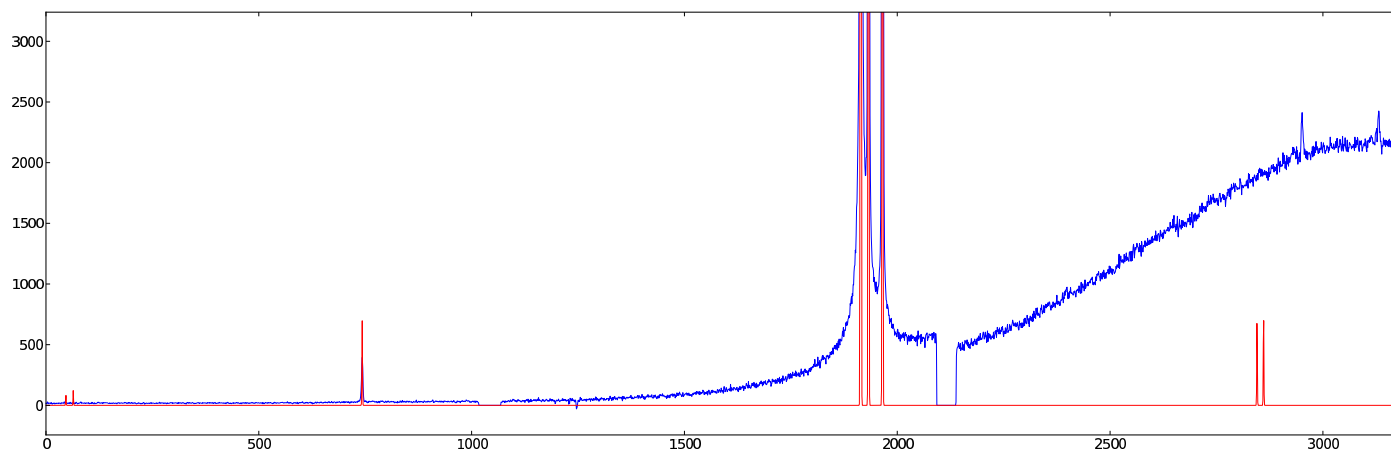


Figure 5: 0926 — 009: HgAr PG3000 GR = 33.125 AR = 66.255 $\lambda\lambda = 3206 - 4031$

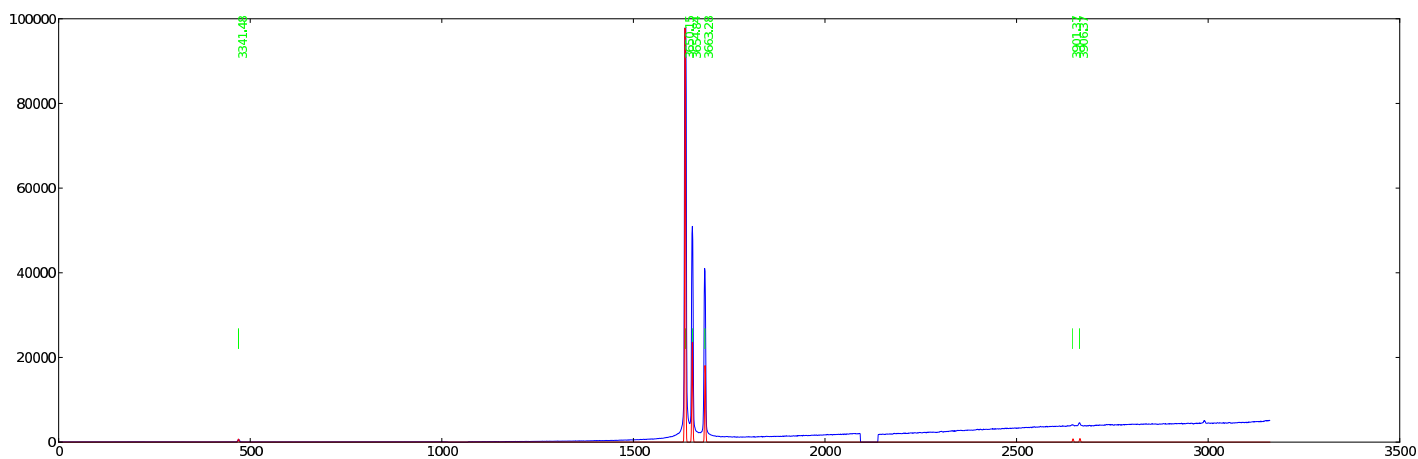


Figure 6: 0926 — 009 (zoom): HgAr PG3000 GR = 33.125 AR = 66.255 $\lambda\lambda = 3206 - 4031$

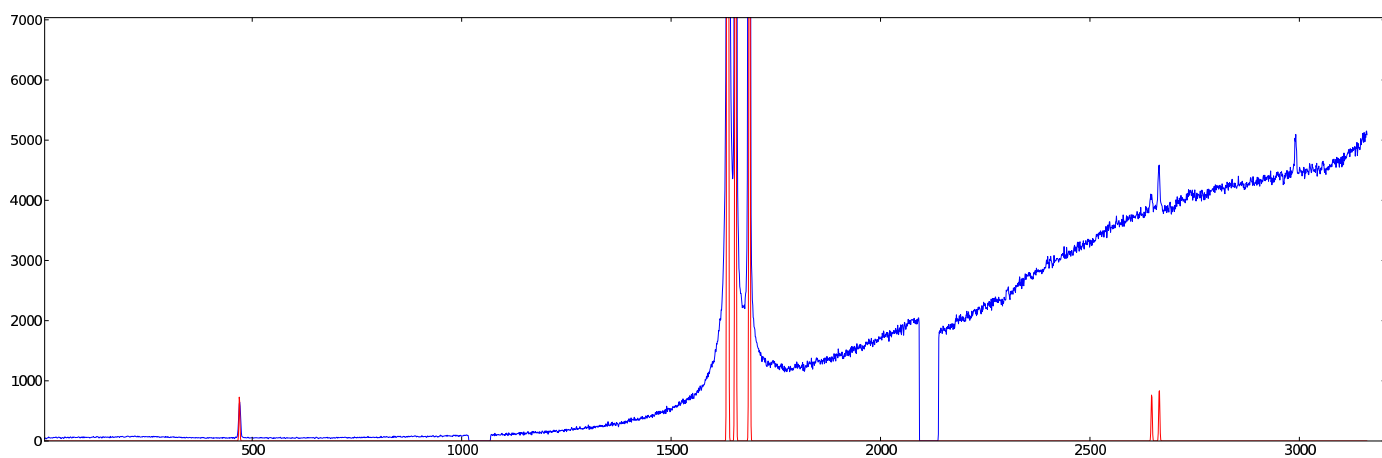


Figure 7: 0930 — 033: HgAr PG3000 GR = 33.875 AR = 67.761 $\lambda\lambda = 3290 - 4094$

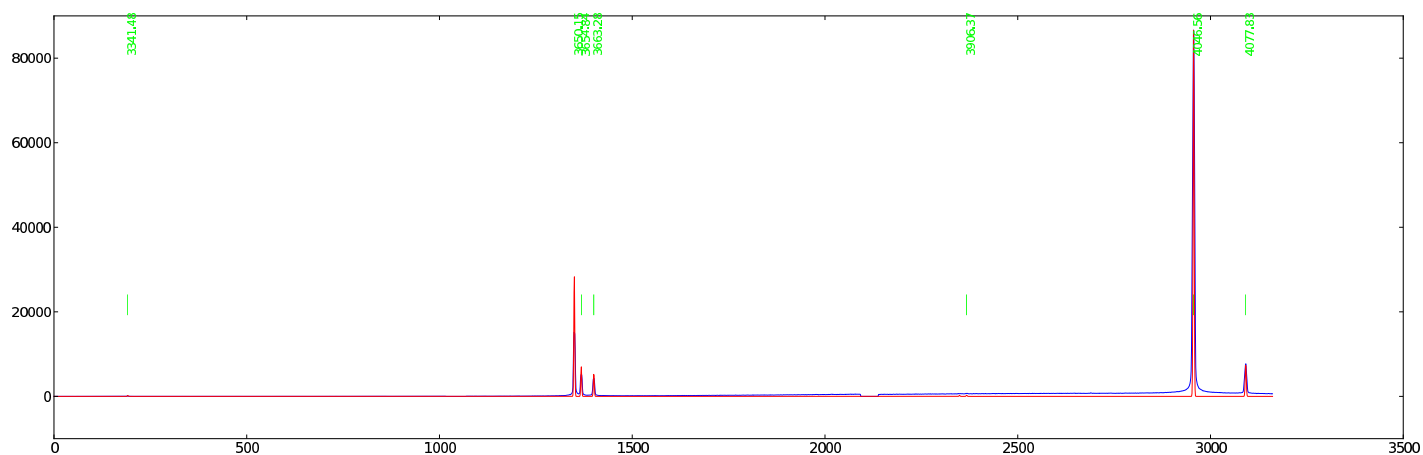


Figure 8: 0930 — 033 (zoom): HgAr PG3000 GR = 33.875 AR = 67.761 $\lambda\lambda = 3290 - 4094$

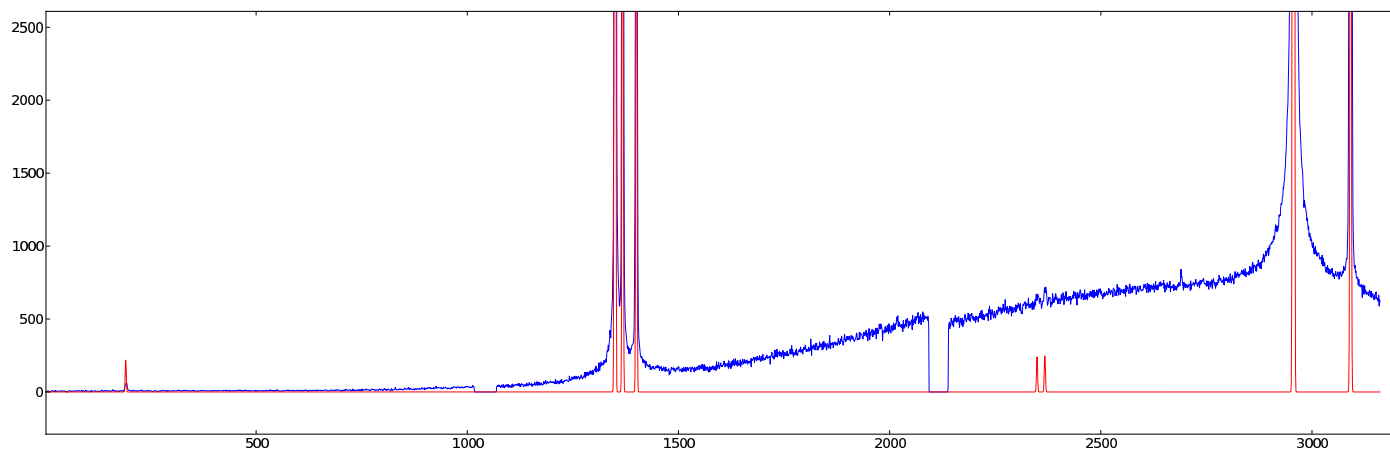


Figure 9: 0102 — 036: HgAr PG3000 GR = 34.248 AR = 68.501 $\lambda\lambda = 3327 - 4128$

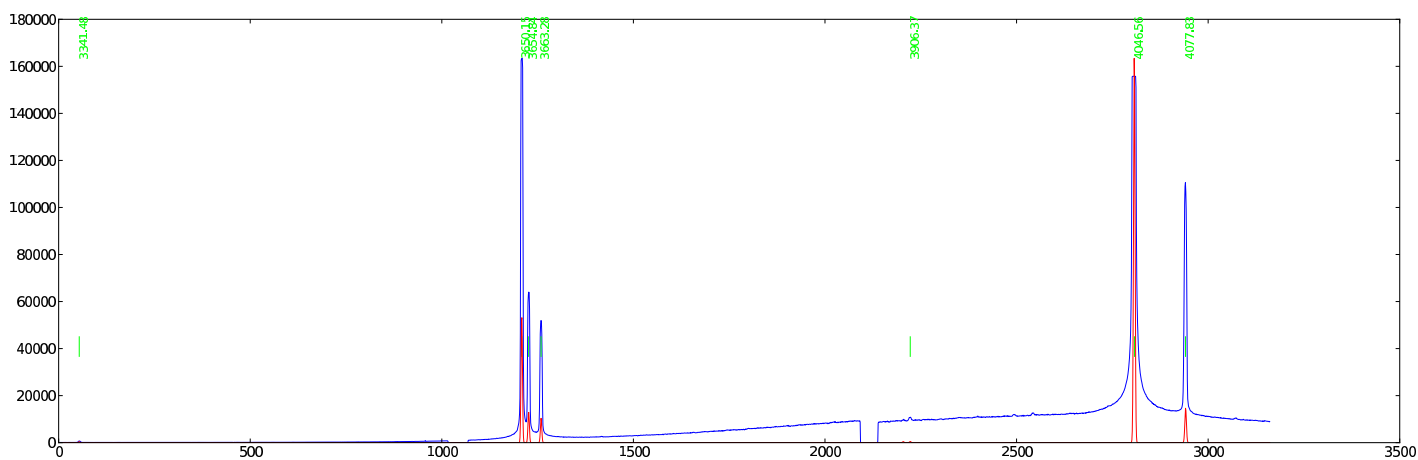


Figure 10: 0102 — 036 (zoom): HgAr PG3000 GR = 34.248 AR = 68.501 $\lambda\lambda = 3327 - 4128$

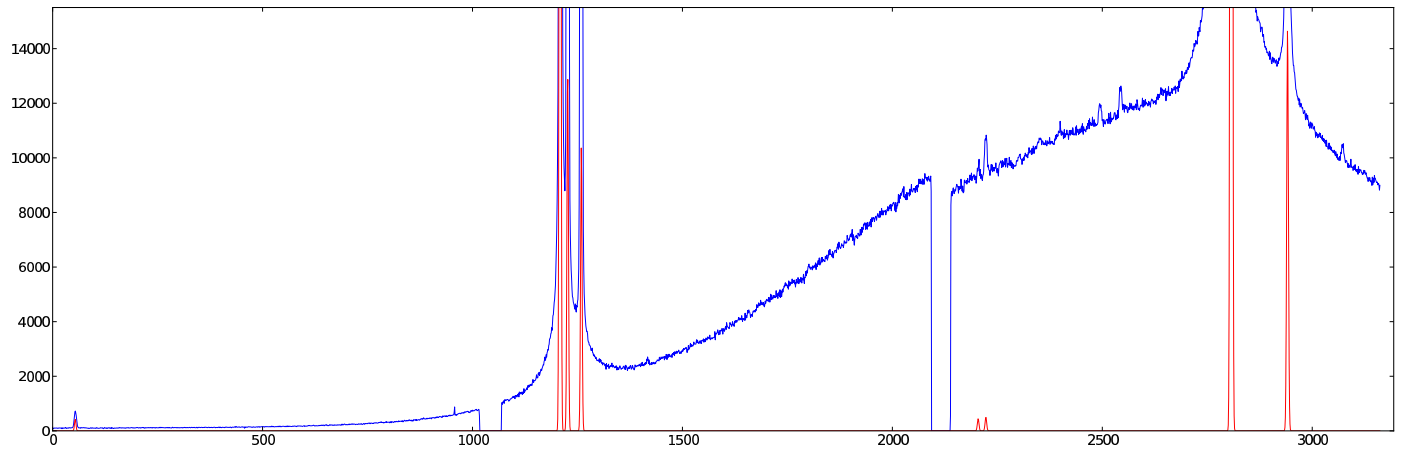


Figure 11: 0930 — 040: HgAr PG3000 GR = 35.000 AR = 70.008 $\lambda\lambda = 3399 - 4195$

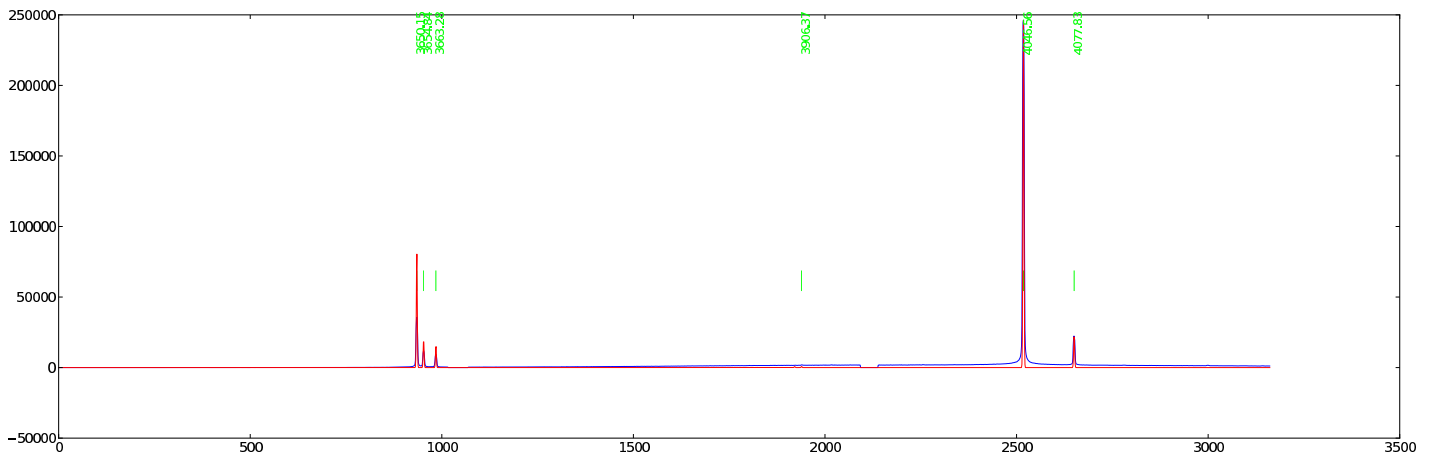


Figure 12: 0930 — 040 (zoom): HgAr PG3000 GR = 35.000 AR = 70.008 $\lambda\lambda = 3399 - 4195$

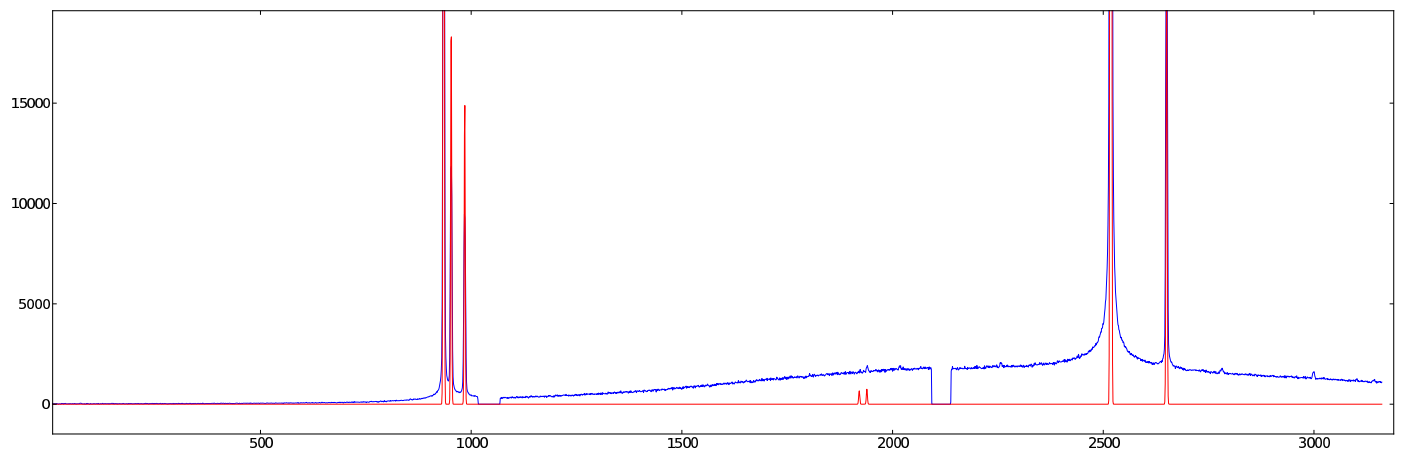


Figure 13: 1110 — 019: HgAr PG3000 GR = 39.125 AR = 78.264 $\lambda\lambda = 3822 - 4525$

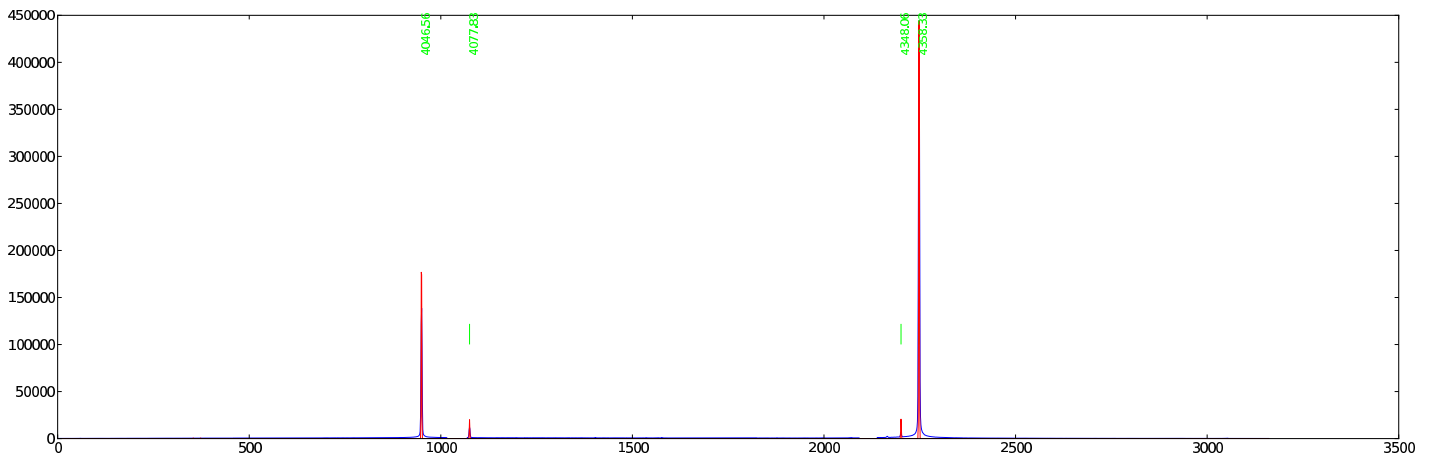


Figure 14: 1110 — 019 (zoom): HgAr PG3000 GR = 39.125 AR = 78.264 $\lambda\lambda = 3822 - 4525$

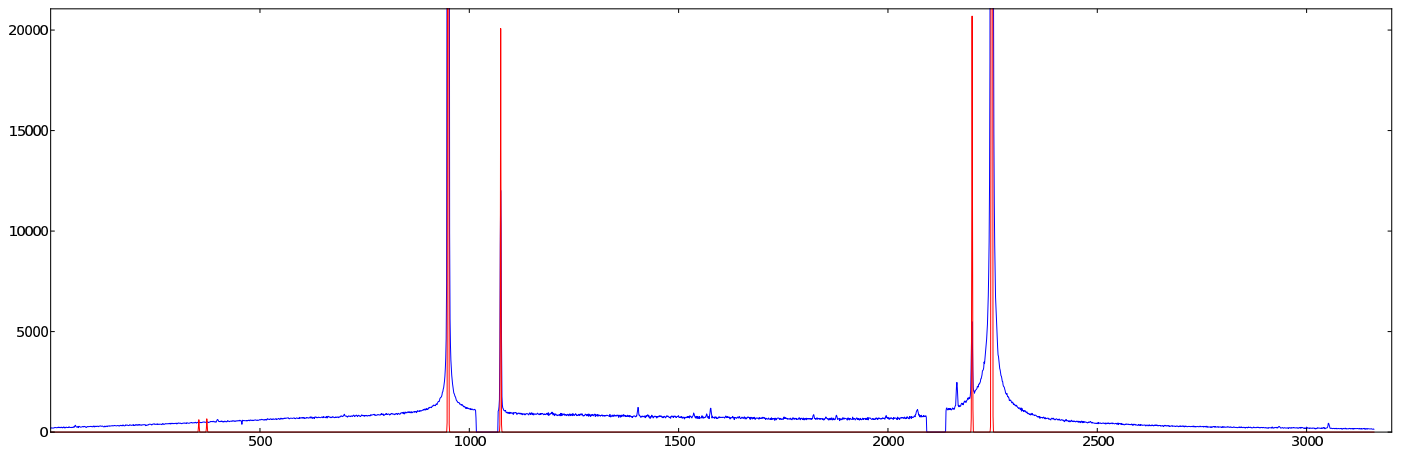


Figure 15: 0920 — 014: HgAr PG3000 GR = 40.625 AR = 81.267 $\lambda\lambda = 3943 - 4687$

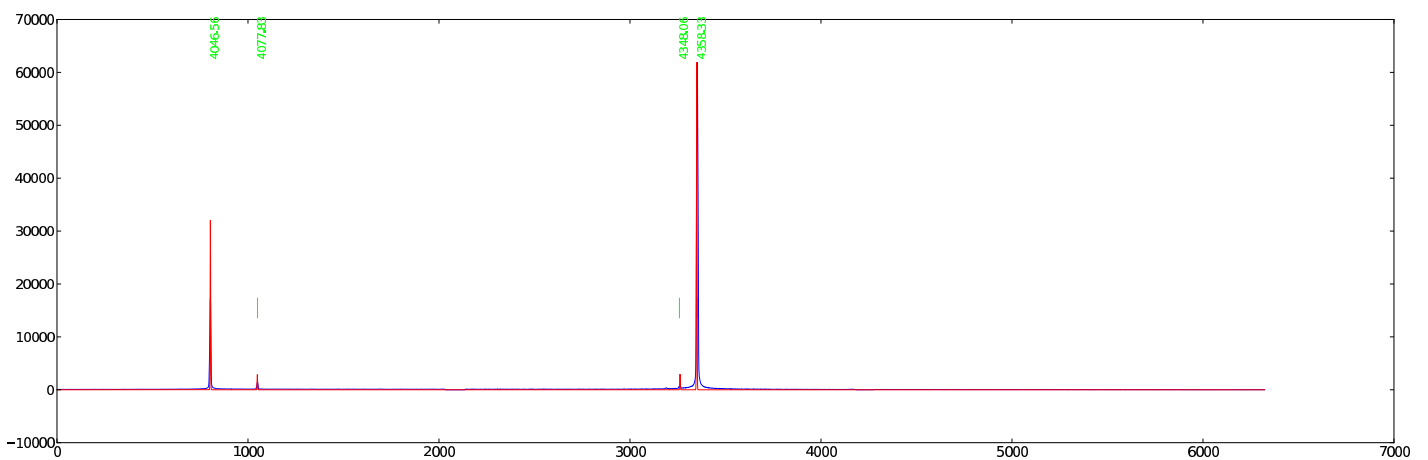


Figure 16: 0920 — 014 (zoom): HgAr PG3000 GR = 40.625 AR = 81.267 $\lambda\lambda = 3943 - 4687$

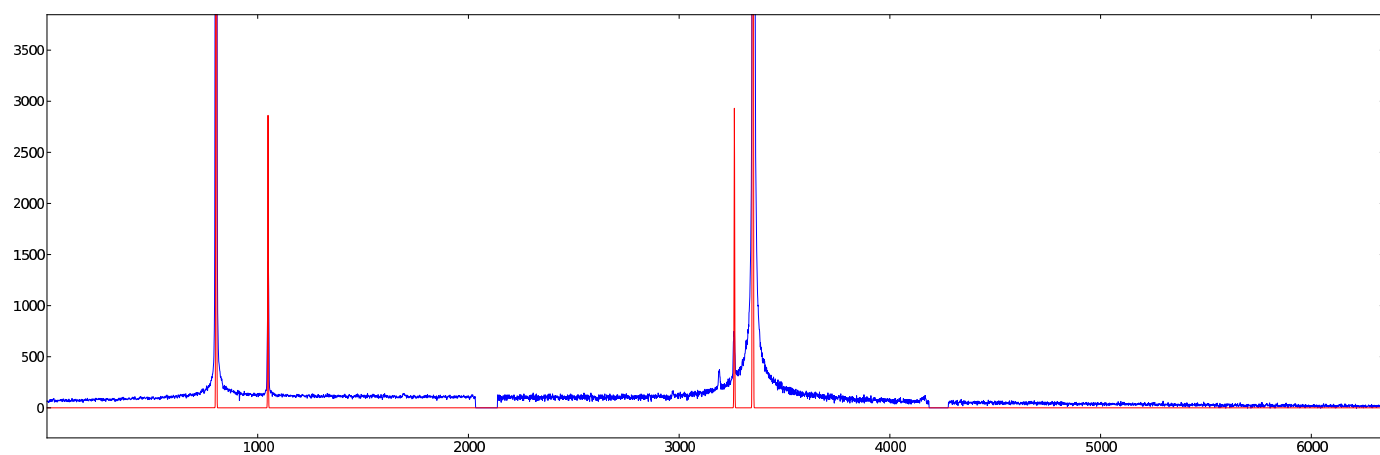


Figure 17: 0802 — 021: HgAr PG0900 GR = 10.248 AR = 20.509 $\lambda\lambda = 2337 - 5484$

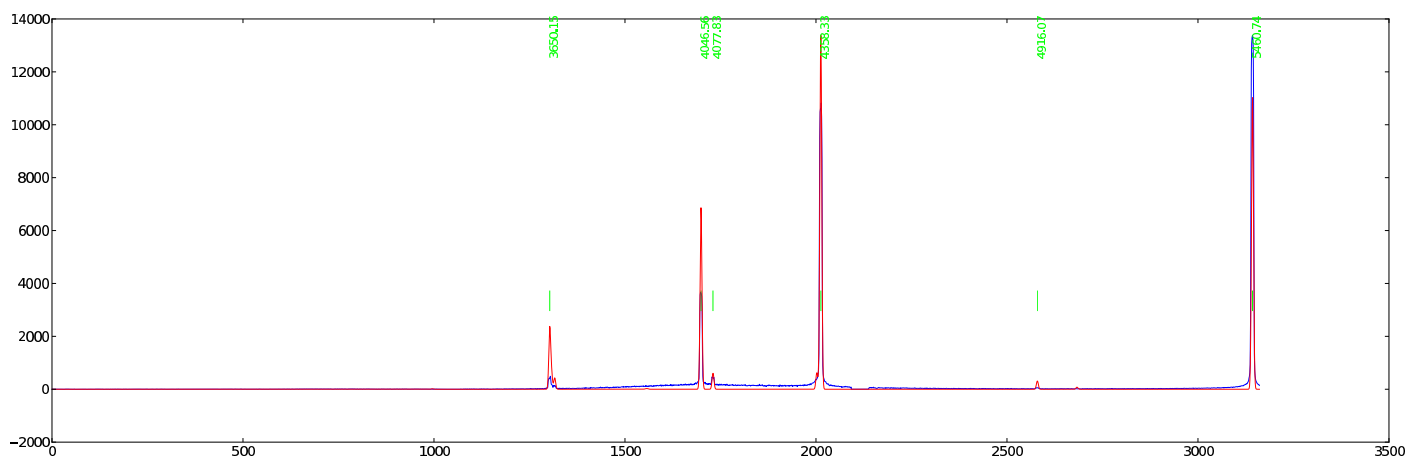


Figure 18: 0802 — 021 (zoom): HgAr PG0900 GR = 10.248 AR = 20.509 $\lambda\lambda = 2337 - 5484$

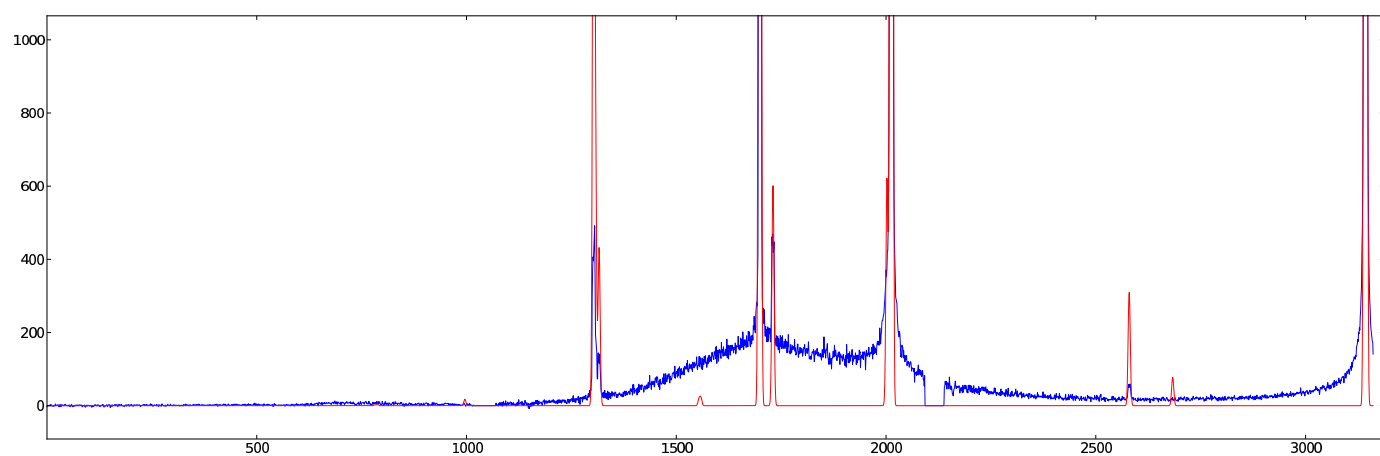


Figure 19: 1123 — 149: HgAr PG0900 GR = 12.123 AR = 24.252 $\lambda\lambda = 3054 - 6175$

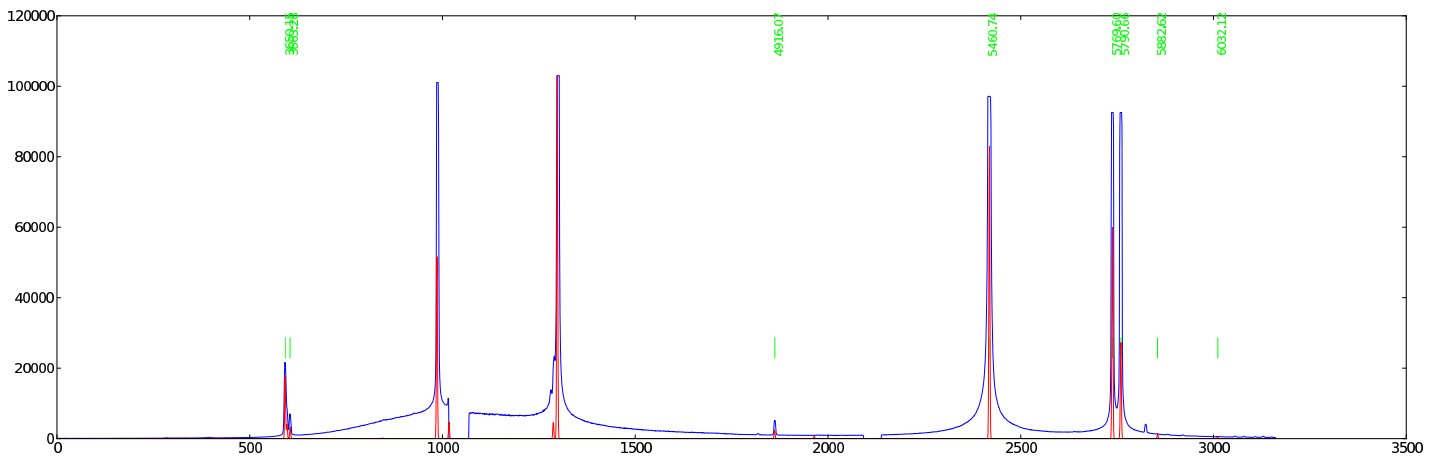


Figure 20: 1123 — 149 (zoom): HgAr PG0900 GR = 12.123 AR = 24.252 $\lambda\lambda = 3054 - 6175$

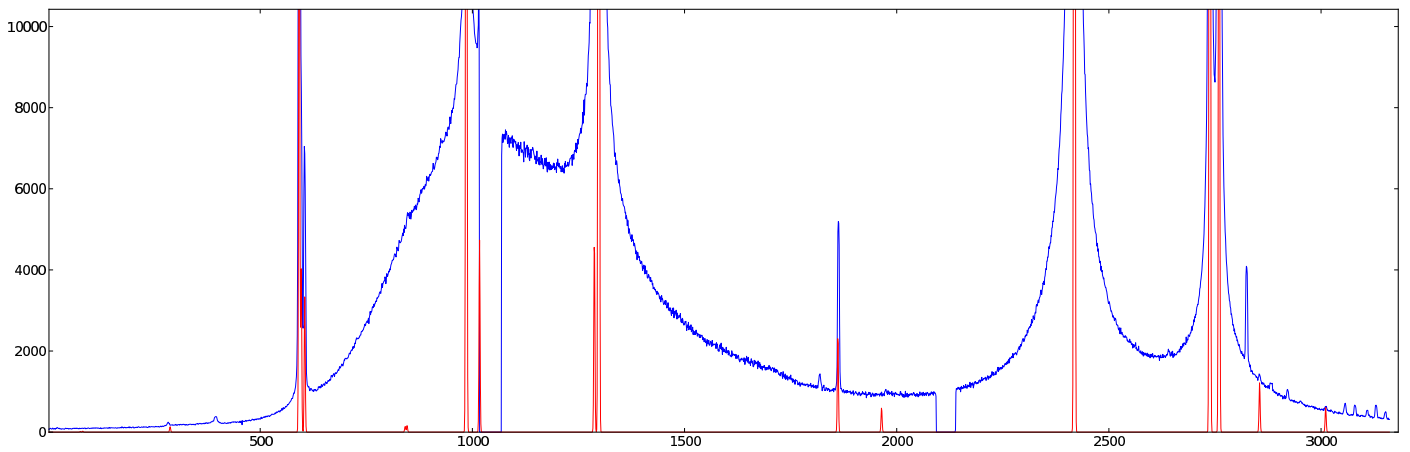


Figure 21: 0226 — 053: HgAr PG0900 GR = 12.127 AR = 24.259 $\lambda\lambda = 3060 - 6177$

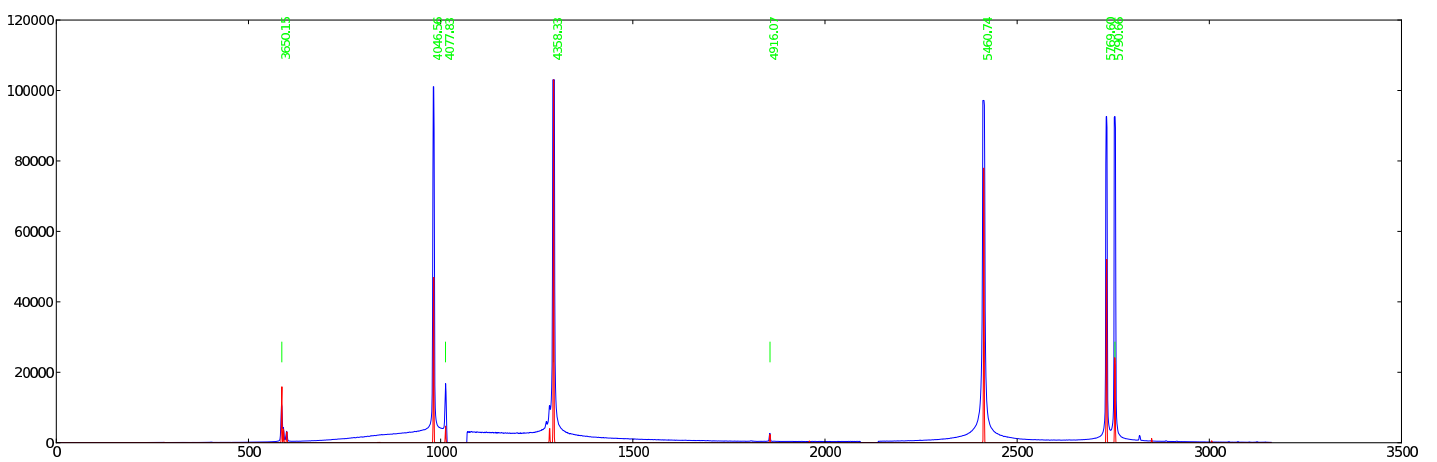


Figure 22: 0226 — 053 (zoom): HgAr PG0900 GR = 12.127 AR = 24.259 $\lambda\lambda = 3060 - 6177$

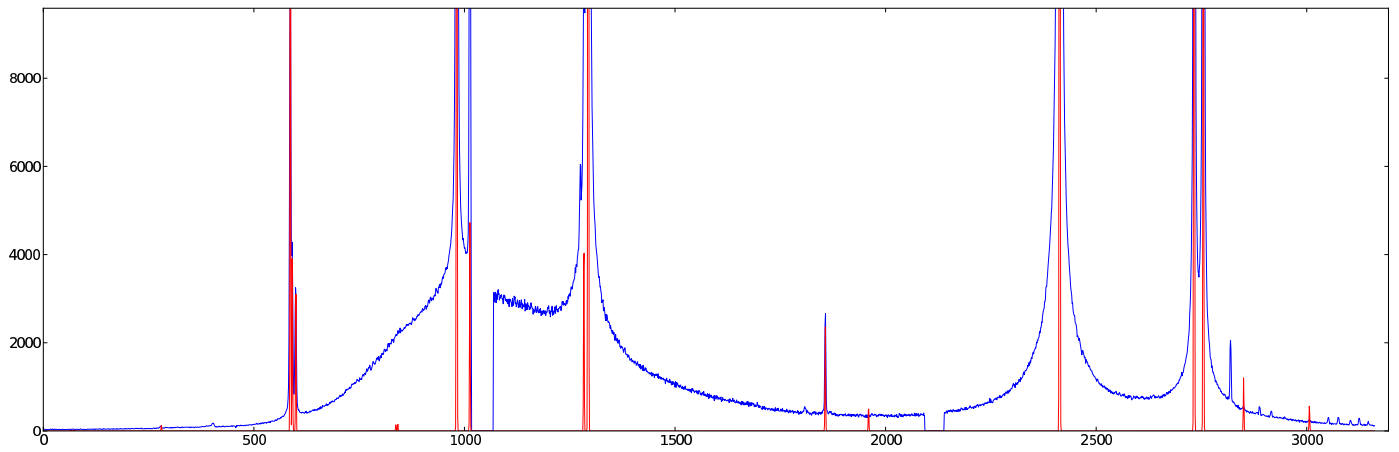


Figure 23: 1123 — 148: HgAr PG0900 GR = 12.500 AR = 25.002 $\lambda\lambda = 3198 - 6315$

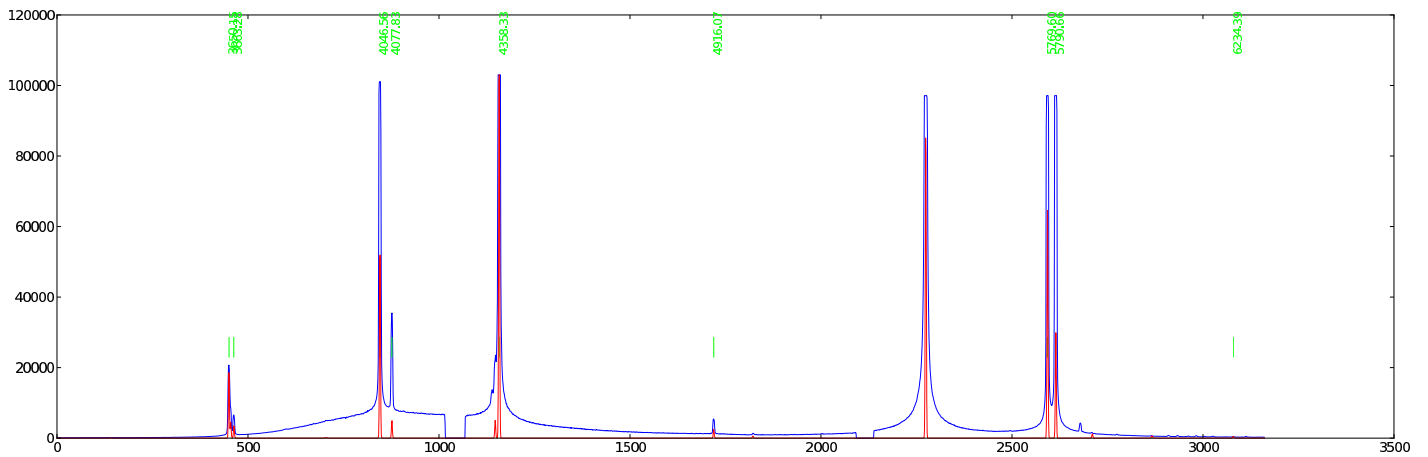


Figure 24: 1123 — 148 (zoom): HgAr PG0900 GR = 12.500 AR = 25.002 $\lambda\lambda = 3198 - 6315$

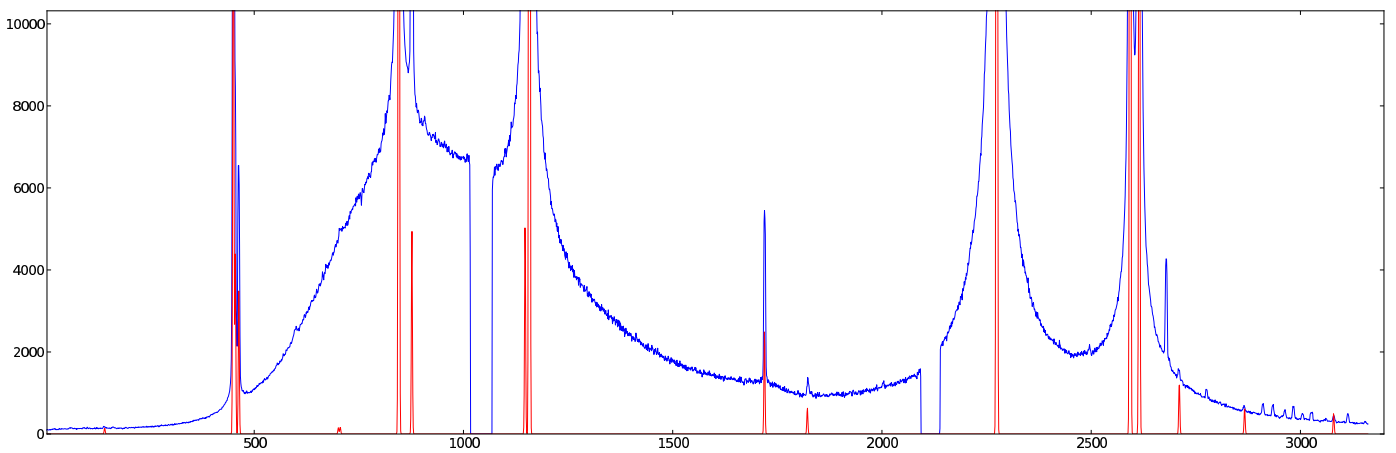


Figure 25: 0926 — 016: HgAr PG0900 GR = 12.502 AR = 25.002 $\lambda\lambda = 3204 - 6313$

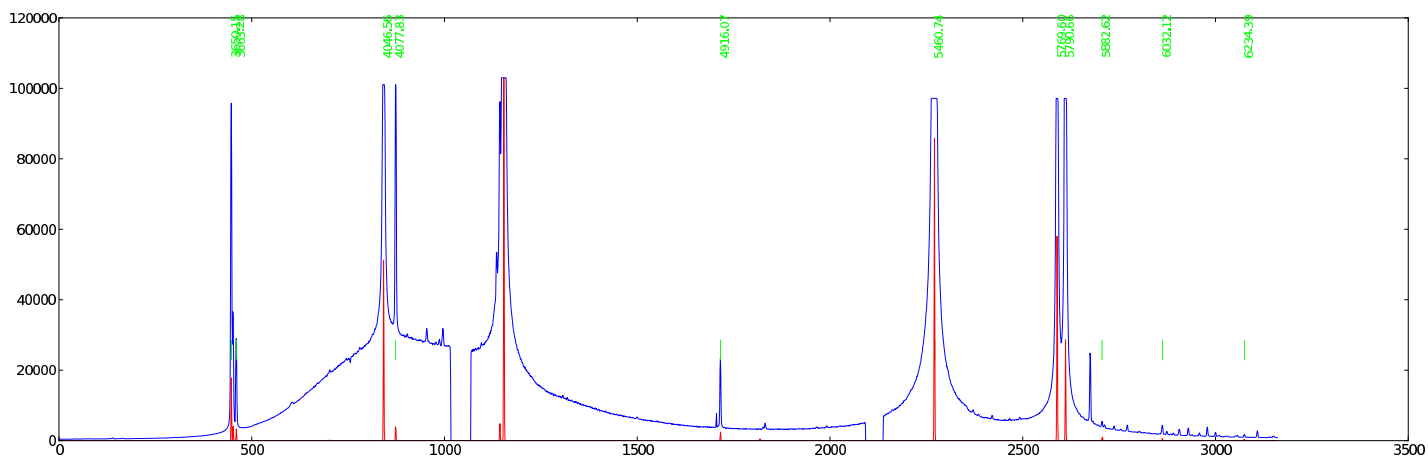


Figure 26: 0926 — 016 (zoom): HgAr PG0900 GR = 12.502 AR = 25.002 $\lambda\lambda = 3204 - 6313$

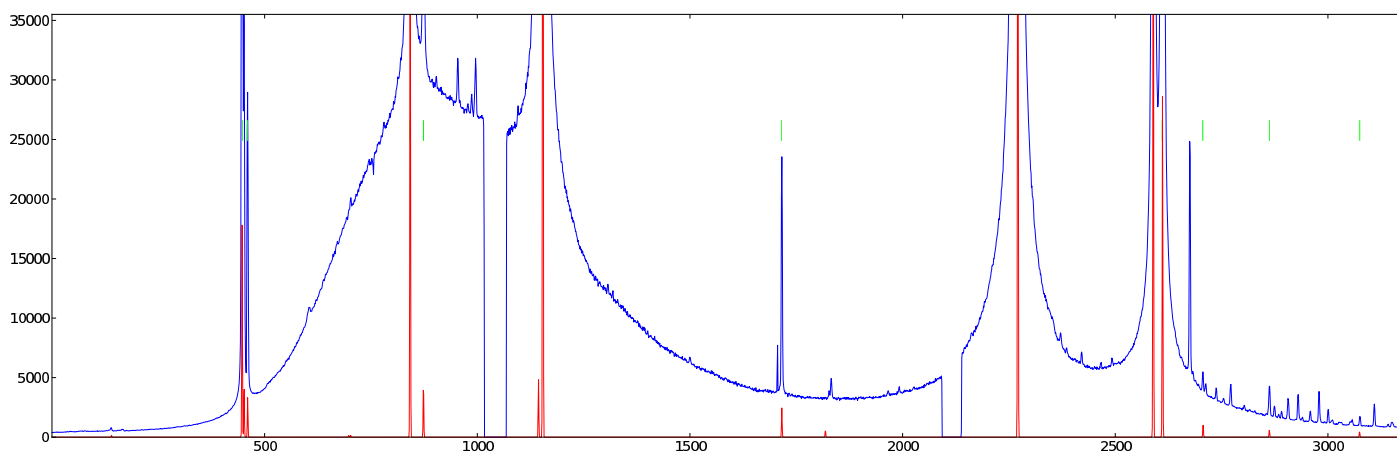


Figure 27: 0802 — 018: HgAr PG0900 GR = 12.875 AR = 25.762 $\lambda\lambda = 3347 - 6453$

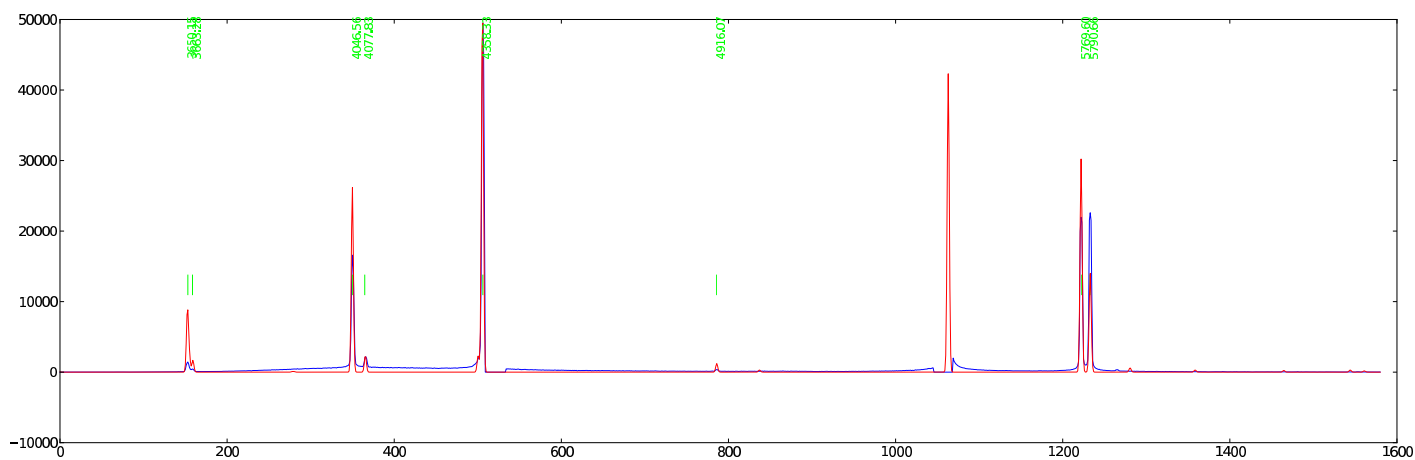


Figure 28: 0802 — 018 (zoom): HgAr PG0900 GR = 12.875 AR = 25.762 $\lambda\lambda = 3347 - 6453$

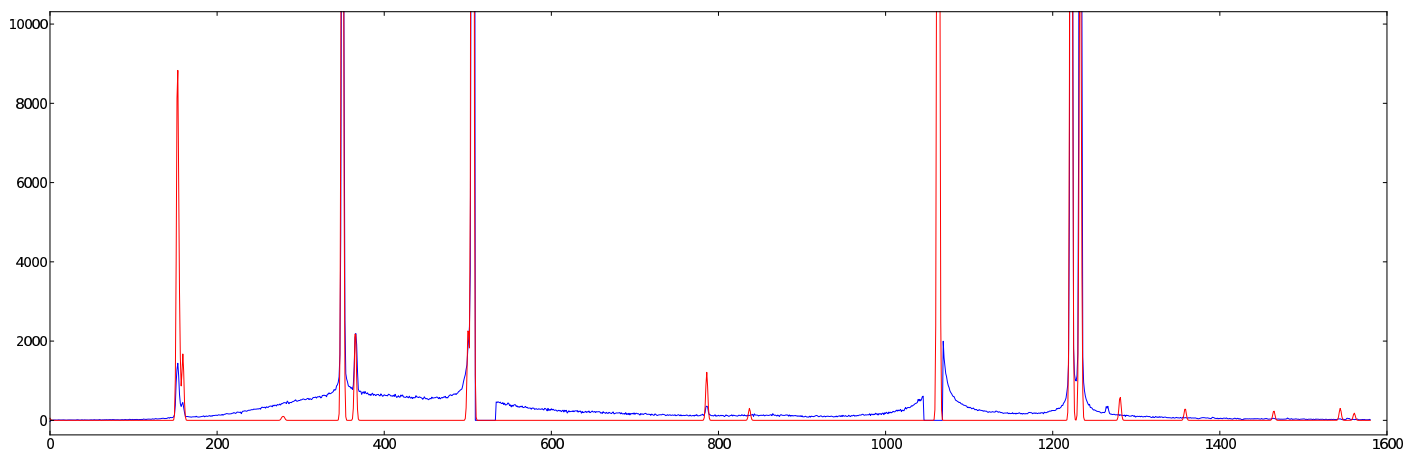


Figure 29: 1123 — 146: HgAr PG0900 GR = 16.622 AR = 33.251 $\lambda\lambda = 4764 - 7813$

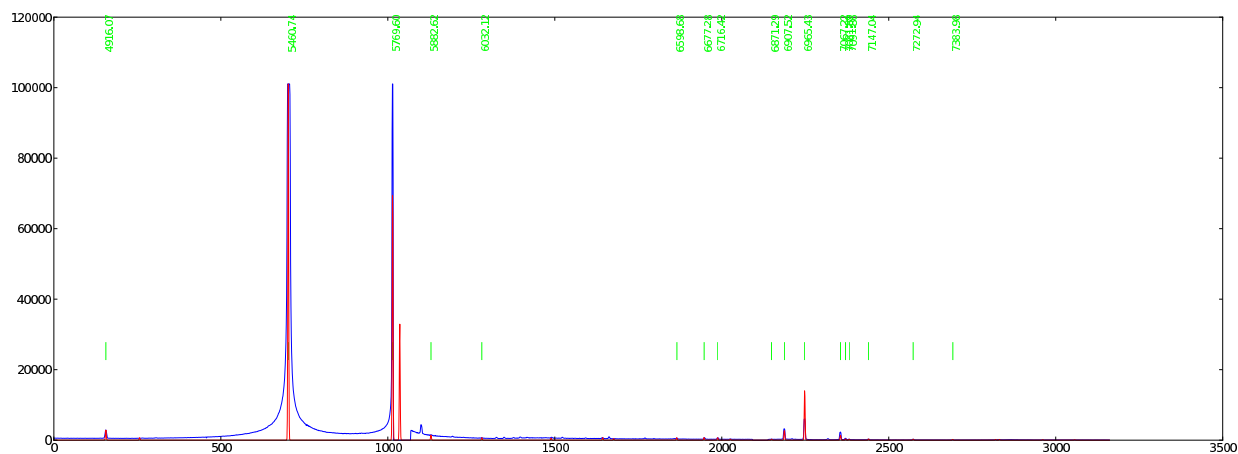


Figure 30: 1123 — 146 (zoom): HgAr PG0900 GR = 16.622 AR = 33.251 $\lambda\lambda = 4764 - 7813$

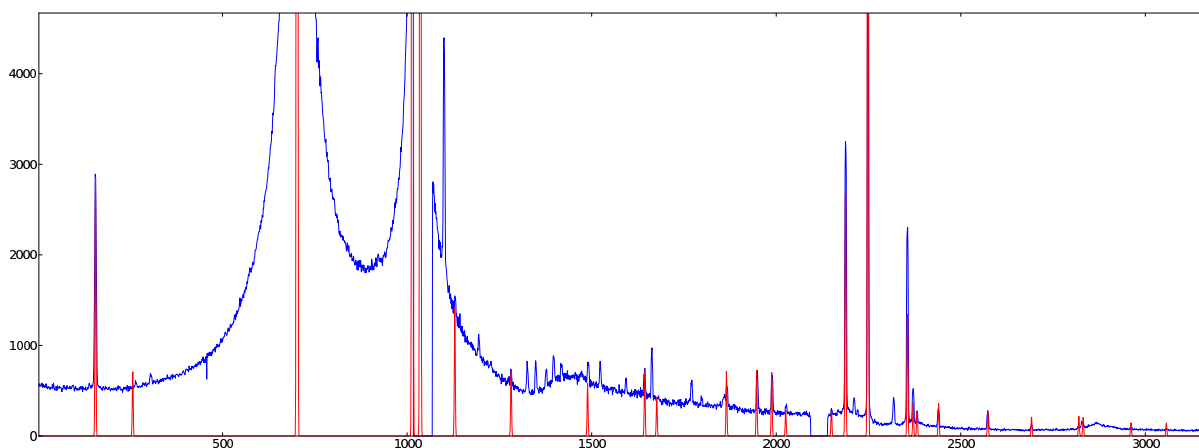


Figure 31: 0228 — 151: HgAr PG0900 GR = 19.250 AR = 38.514 $\lambda\lambda = 5751 - 8761$

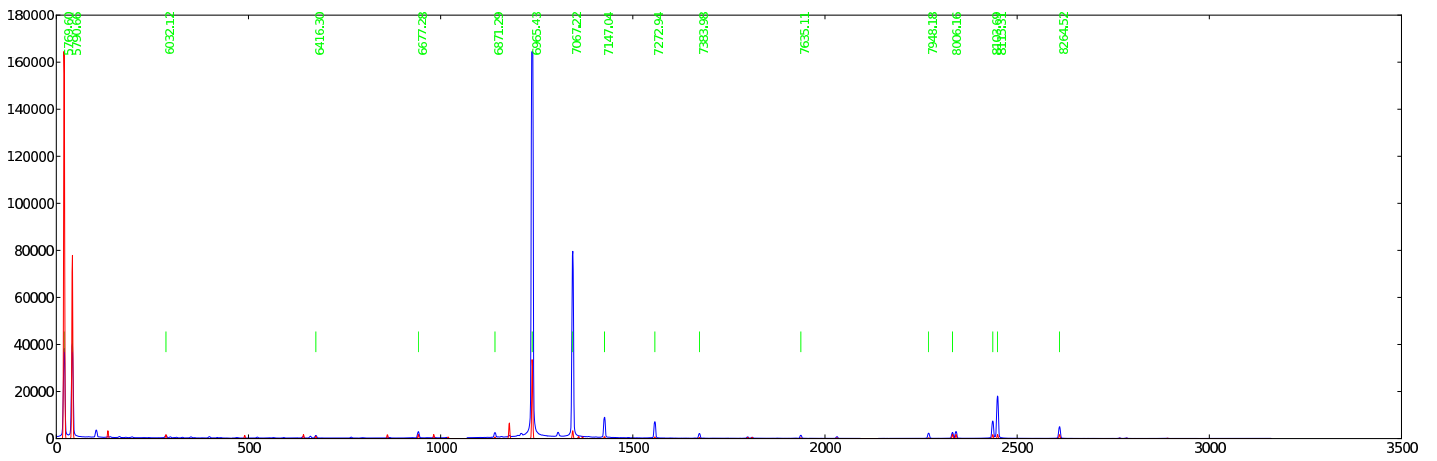


Figure 32: 0228 — 151 (zoom): HgAr PG0900 GR = 19.250 AR = 38.514 $\lambda\lambda = 5751 - 8761$

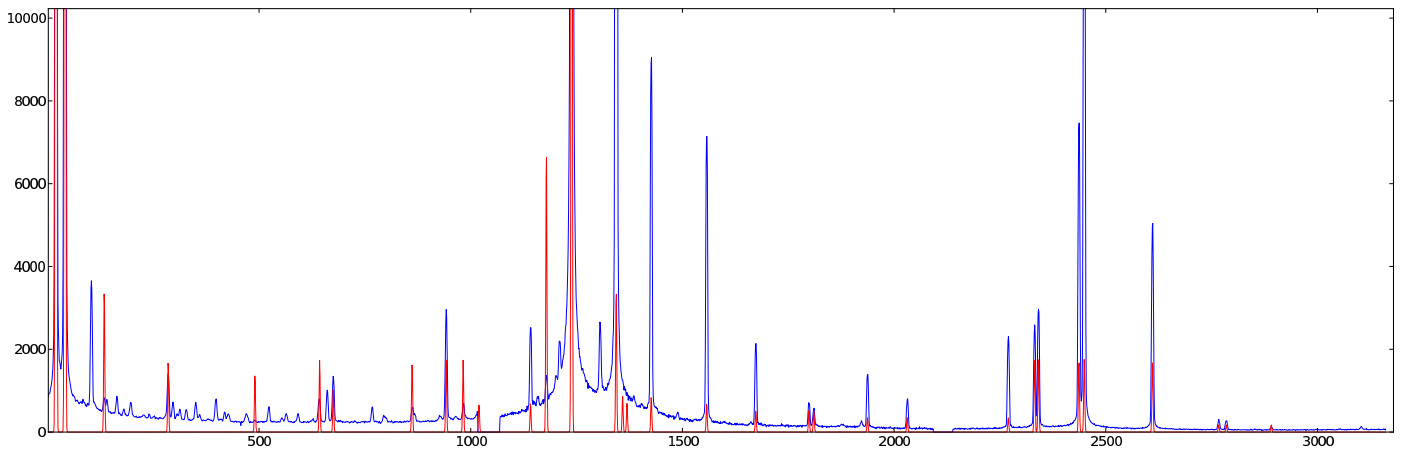


Figure 33: 0228 — 145: HgAr PG0900 GR = 19.250 AR = 38.514 $\lambda\lambda = 5753 - 8762$

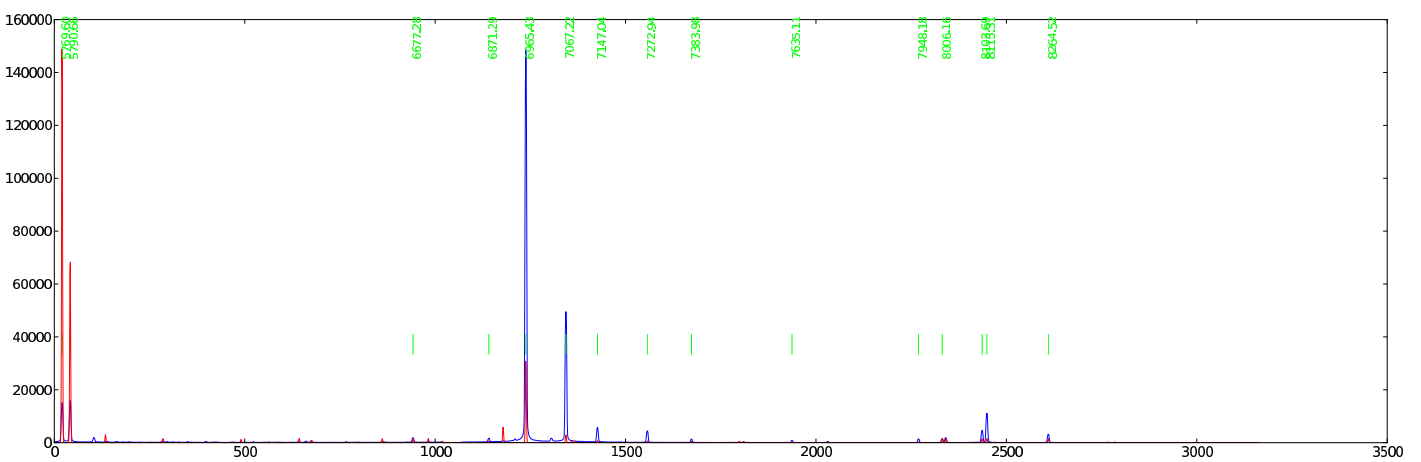


Figure 34: 0228 — 145 (zoom): HgAr PG0900 GR = 19.250 AR = 38.514 $\lambda\lambda = 5753 - 8762$

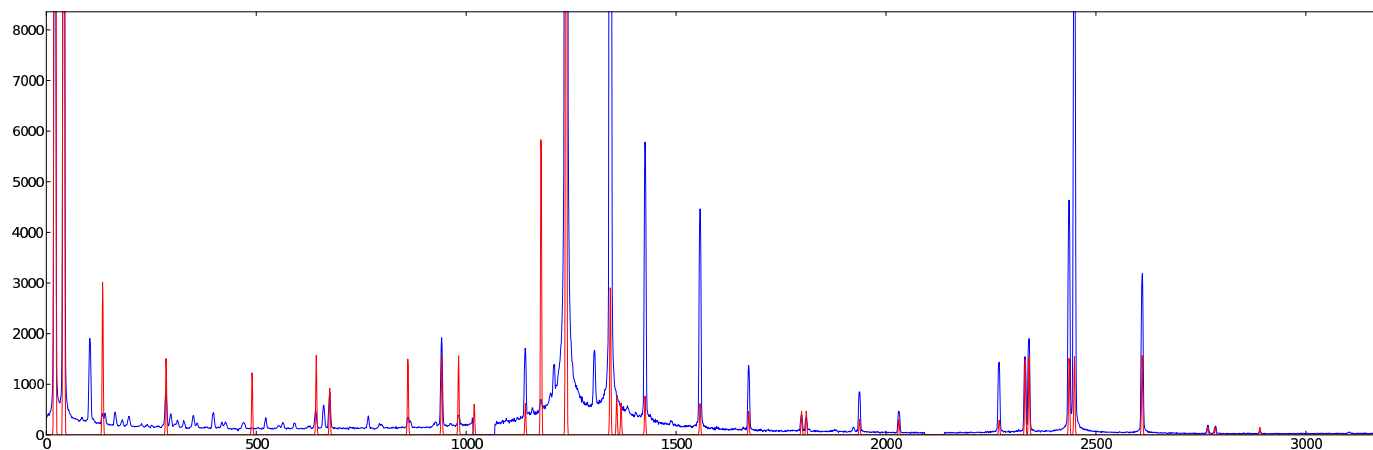


Figure 35: 0806 — 098: HgAr PG0900 GR = 19.622 AR = 39.246 $\lambda\lambda = 5891 - 8884$

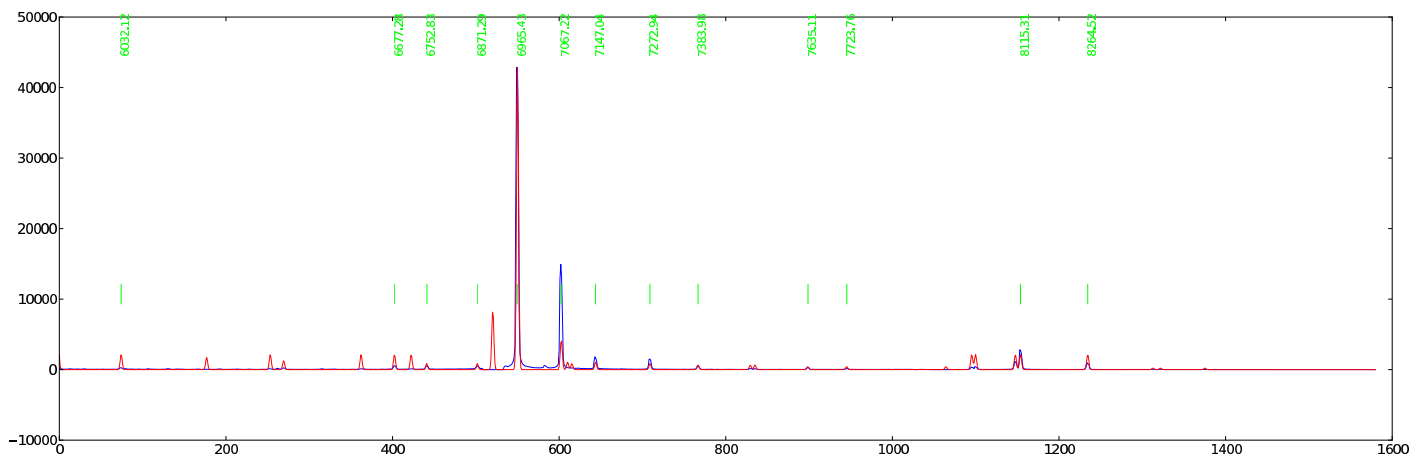


Figure 36: 0806 — 098 (zoom): HgAr PG0900 GR = 19.622 AR = 39.246 $\lambda\lambda = 5891 - 8884$

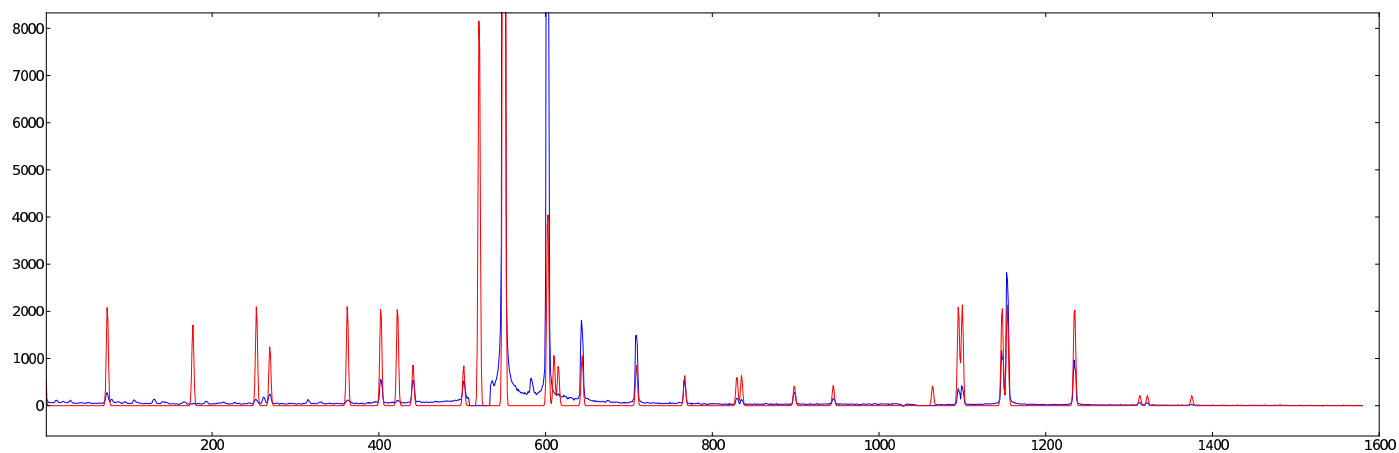


Figure 37: 1123 — 145: HgAr PG0900 GR = 21.128 AR = 42.248 $\lambda\lambda = 6438 - 9431$

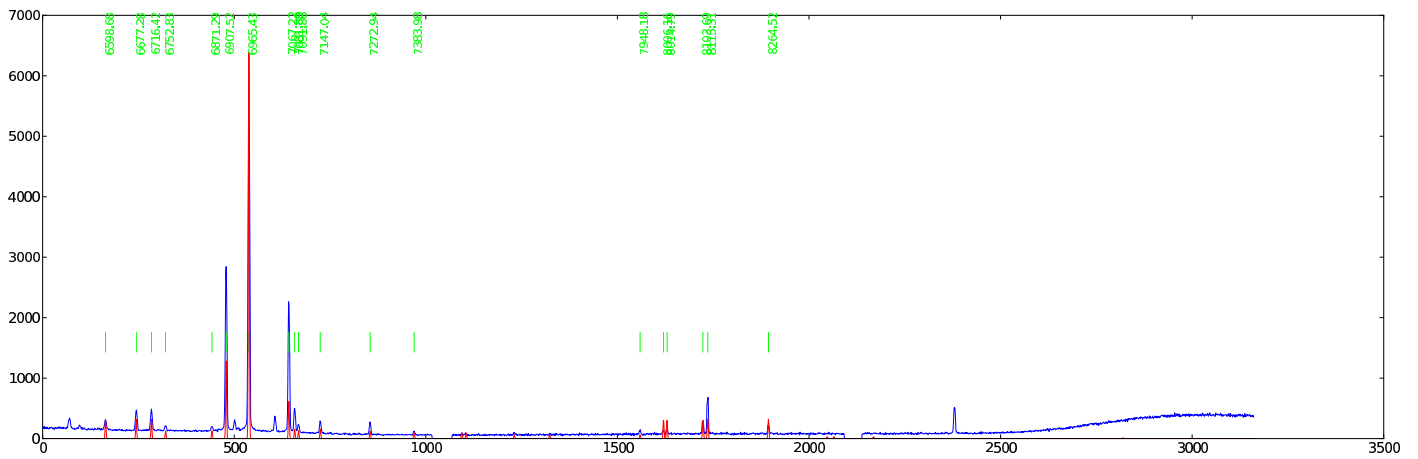


Figure 38: 1123 — 145 (zoom): HgAr PG0900 GR = 21.128 AR = 42.248 $\lambda\lambda = 6438 - 9431$

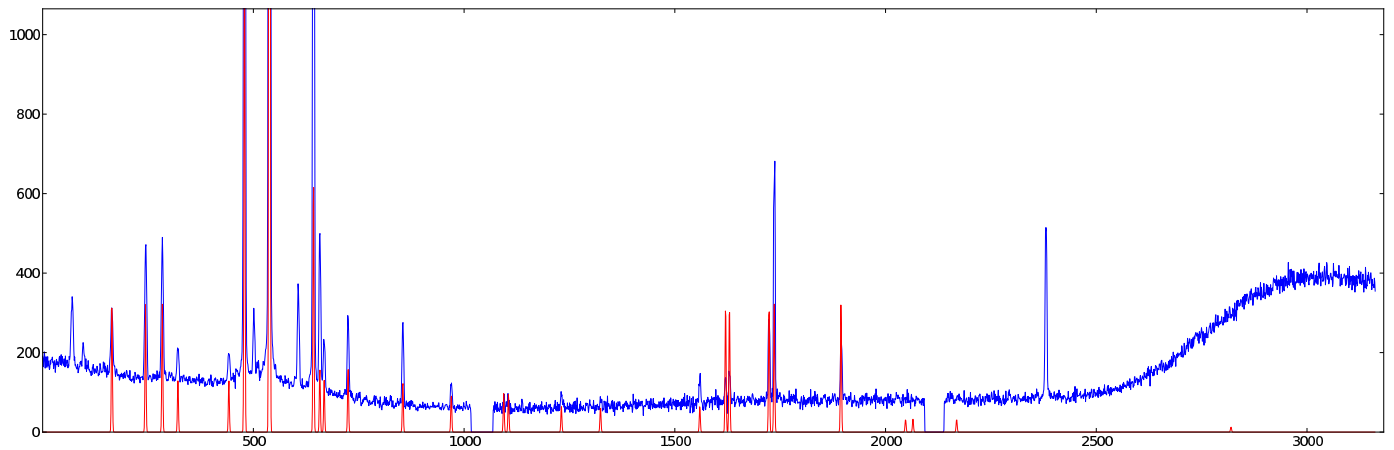


Figure 39: 1123 — 147: HgAr PG0900 GR = 21.503 AR = 42.998 $\lambda\lambda = 6579 - 9556$

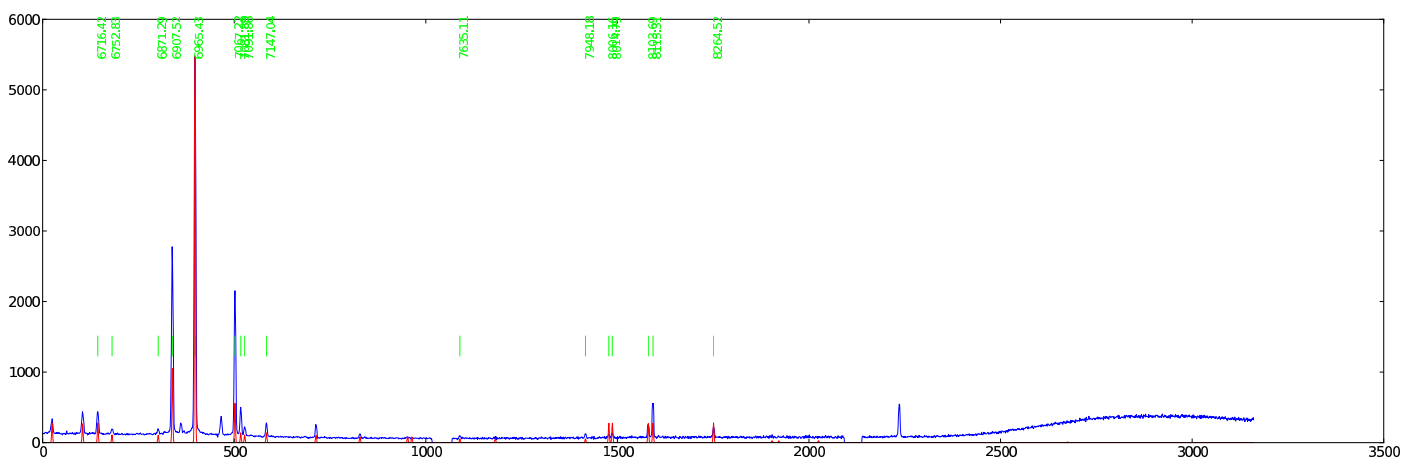


Figure 40: 1123 — 147 (zoom): HgAr PG0900 GR = 21.503 AR = 42.998 $\lambda\lambda = 6579 - 9556$

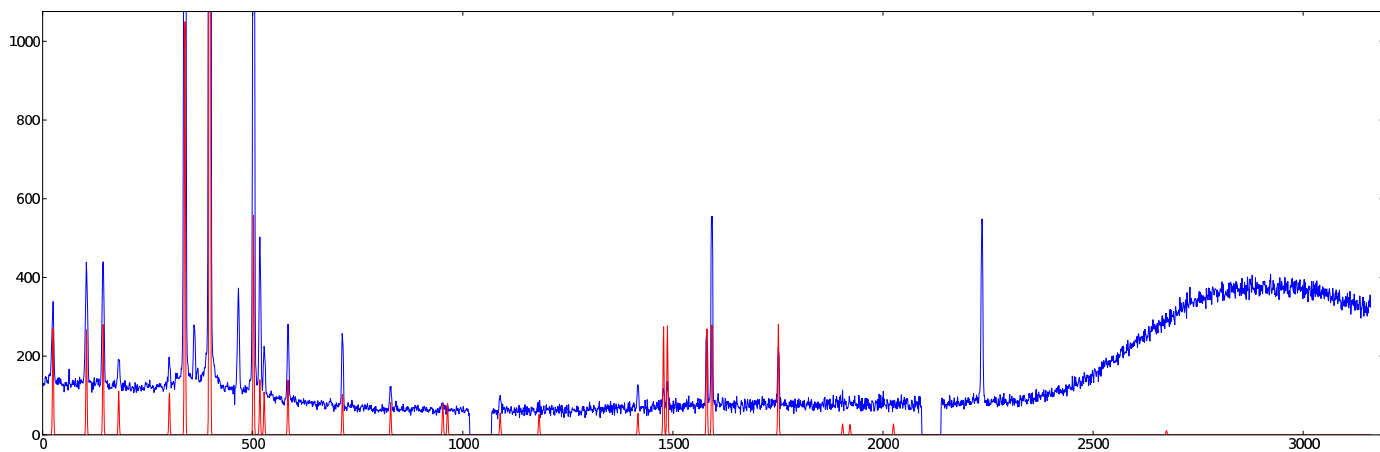


Figure 41: 1123 — 144: HgAr PG0900 GR = 21.503 AR = 43.000 $\lambda\lambda = 6574 - 9544$

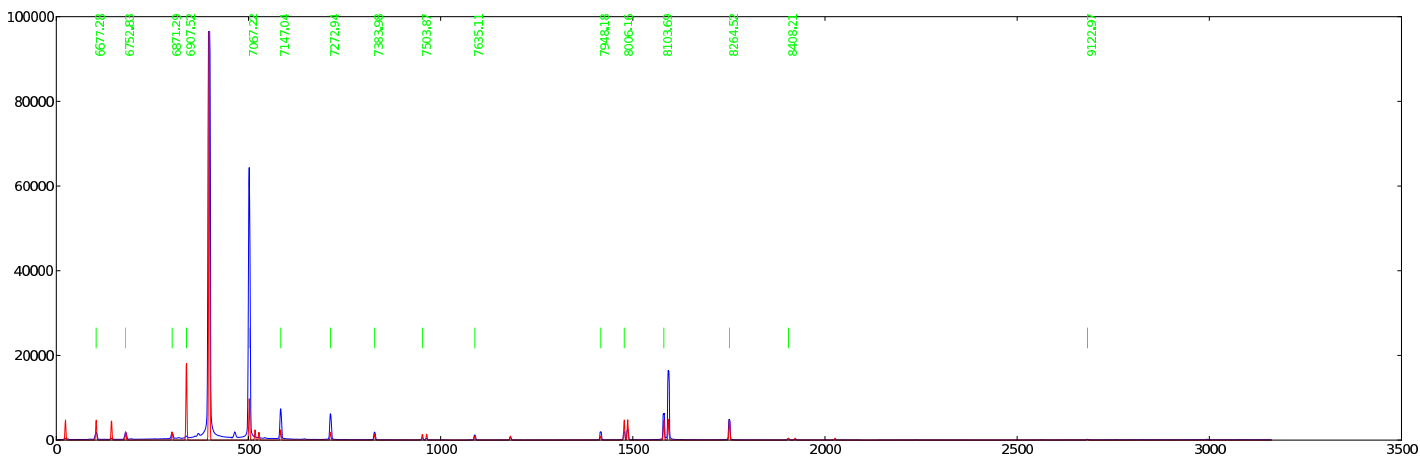


Figure 42: 1123 — 144 (zoom): HgAr PG0900 GR = 21.503 AR = 43.000 $\lambda\lambda = 6574 - 9544$

