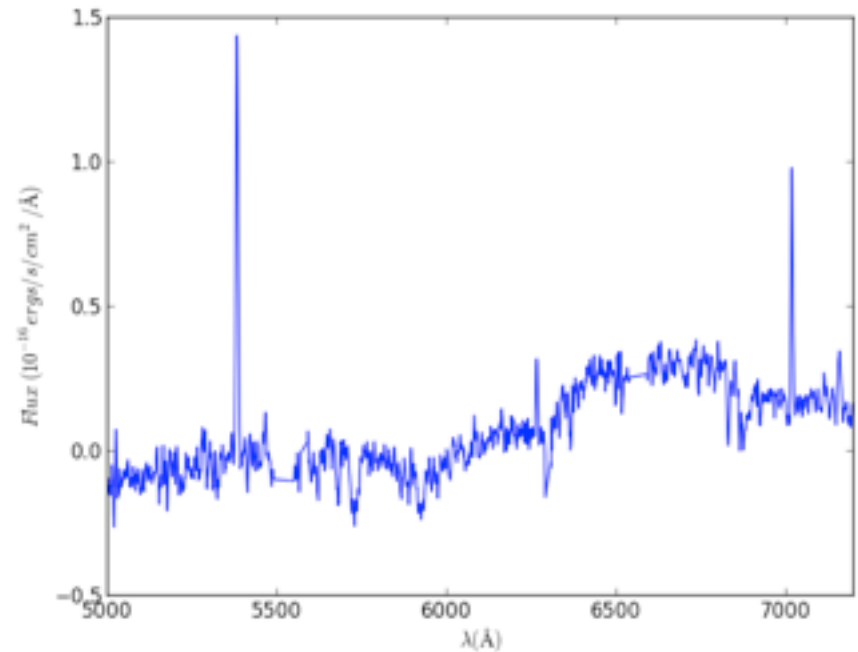
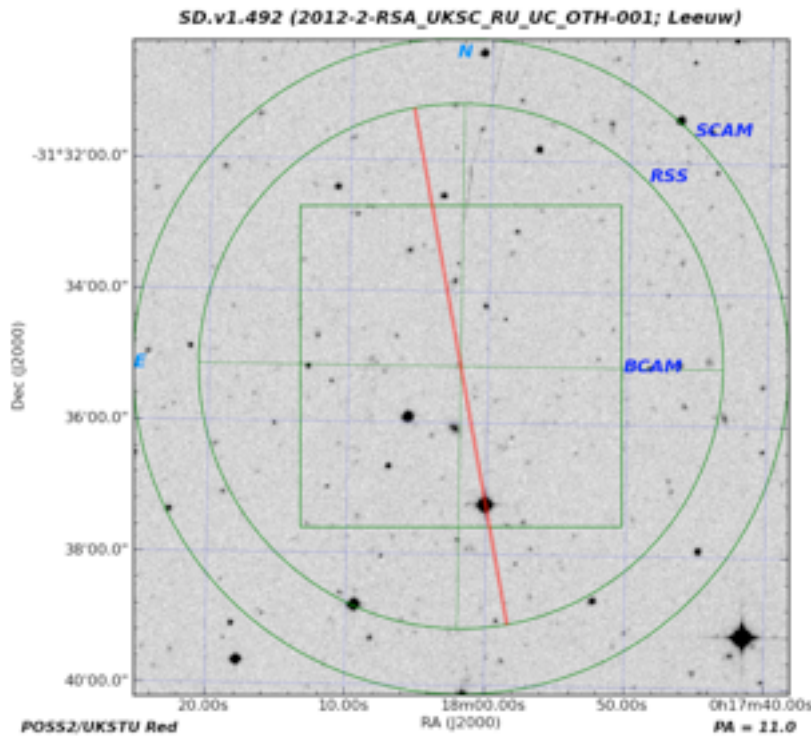


SALT Finding Chart and Detected Spectrum of H-ATLAS Lens SDv1.492 (V~21) at $z = 0.443$



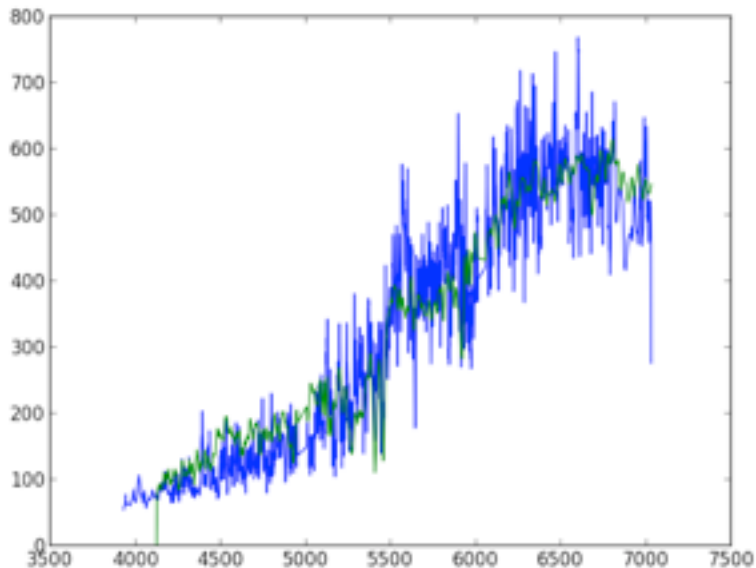
Leeuw, Crawford, H-ATLAS-team et al. SAIP 2013

Dynamical Mass Measurements of ACT SZ-Effect Selected Galaxy Clusters

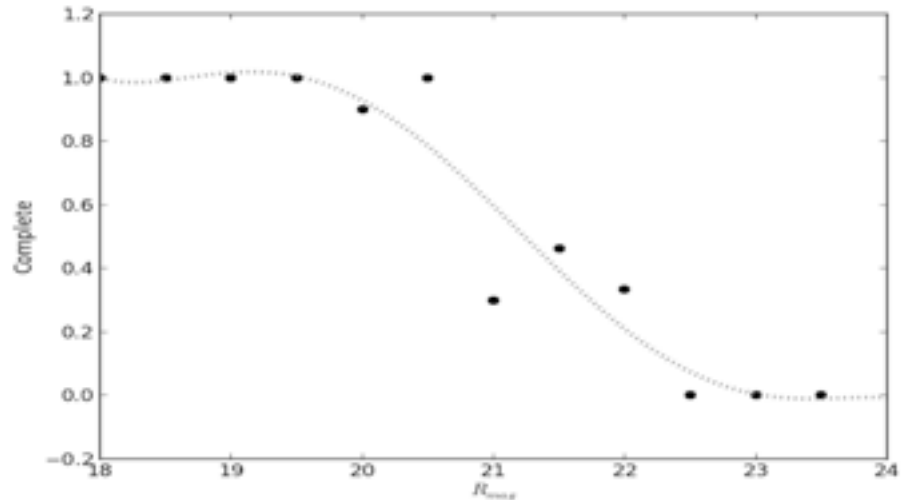
Hilton (UKZN), Moodley (UKZN), Cress (CHPC), Kirk (CHPC)

Observation Details

- PG0900 Grating
- 3 MOS masks
- 2 visits per mask
- Total $t_{\text{exp}}=3900\text{s}$
- 73 objects with 35 redshifts measured
- Target red sequence galaxies



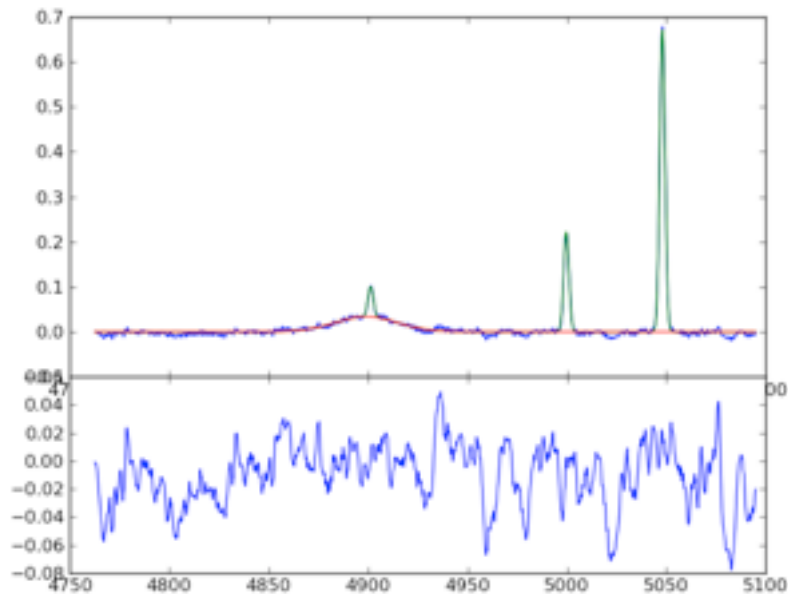
Example Galaxy at $z=0.3737$
with $r=20.3$



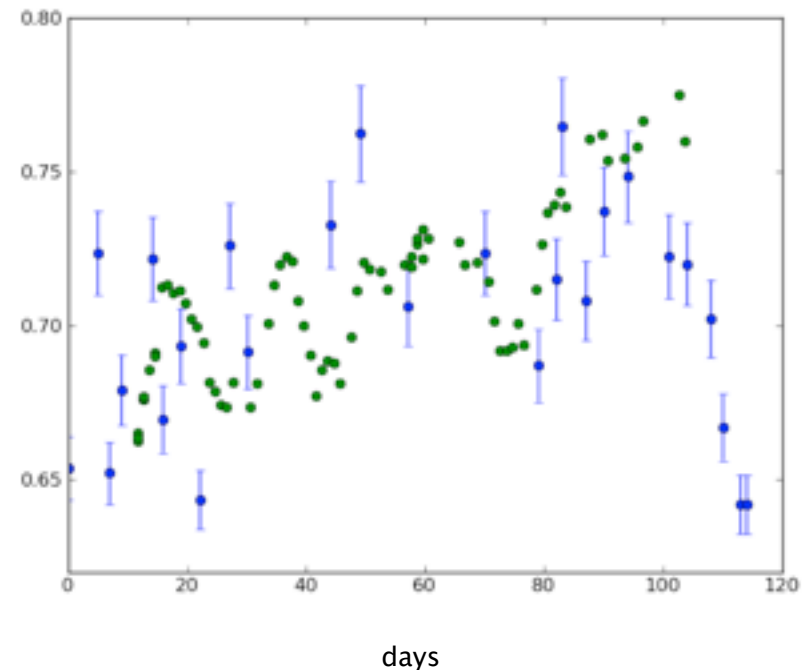
Reverberation Mapping of AGN

Encarni Romero Colmenero, Steve Crawford et al.

Fitting the H β line



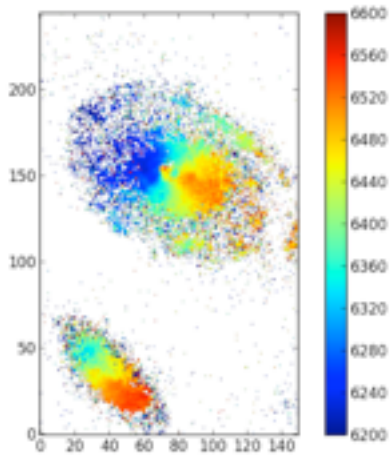
Light Lag in days



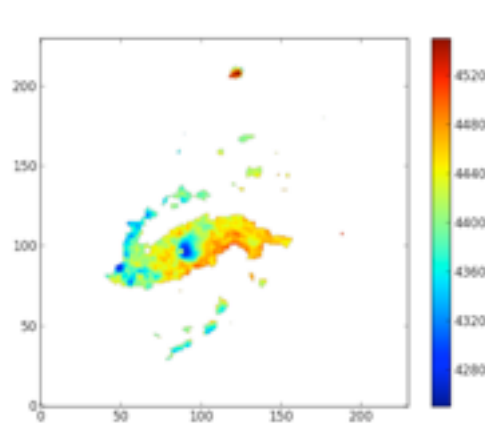
Preliminary results indicate good agreement with measurement from other methods

Emission-Line Spectroscopy of Galaxies in the RESOLVE Survey

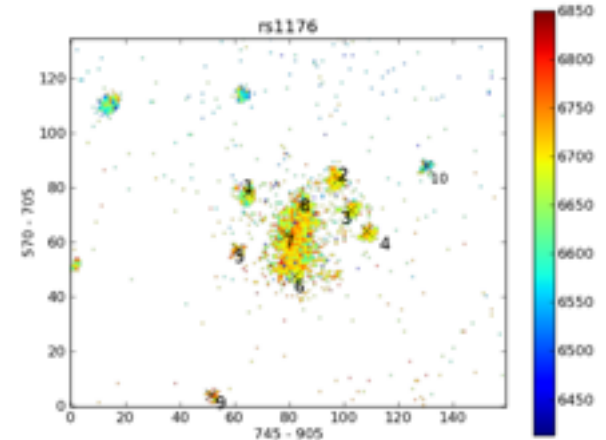
Liz Naluminsa (SAAO), Sheila Kannappan (UNC), Steve Crawford (SAAO), Petri Vaisanen (SALT), RESOLVE Team



$r \sim 13$
 $t = 240$ s per scan
bright time
MR



$r \sim 13$
 $t = 220$ s per scan
bright time
MR



$r = 17.23$
 $t = 220$ s per scan
dark time
MR