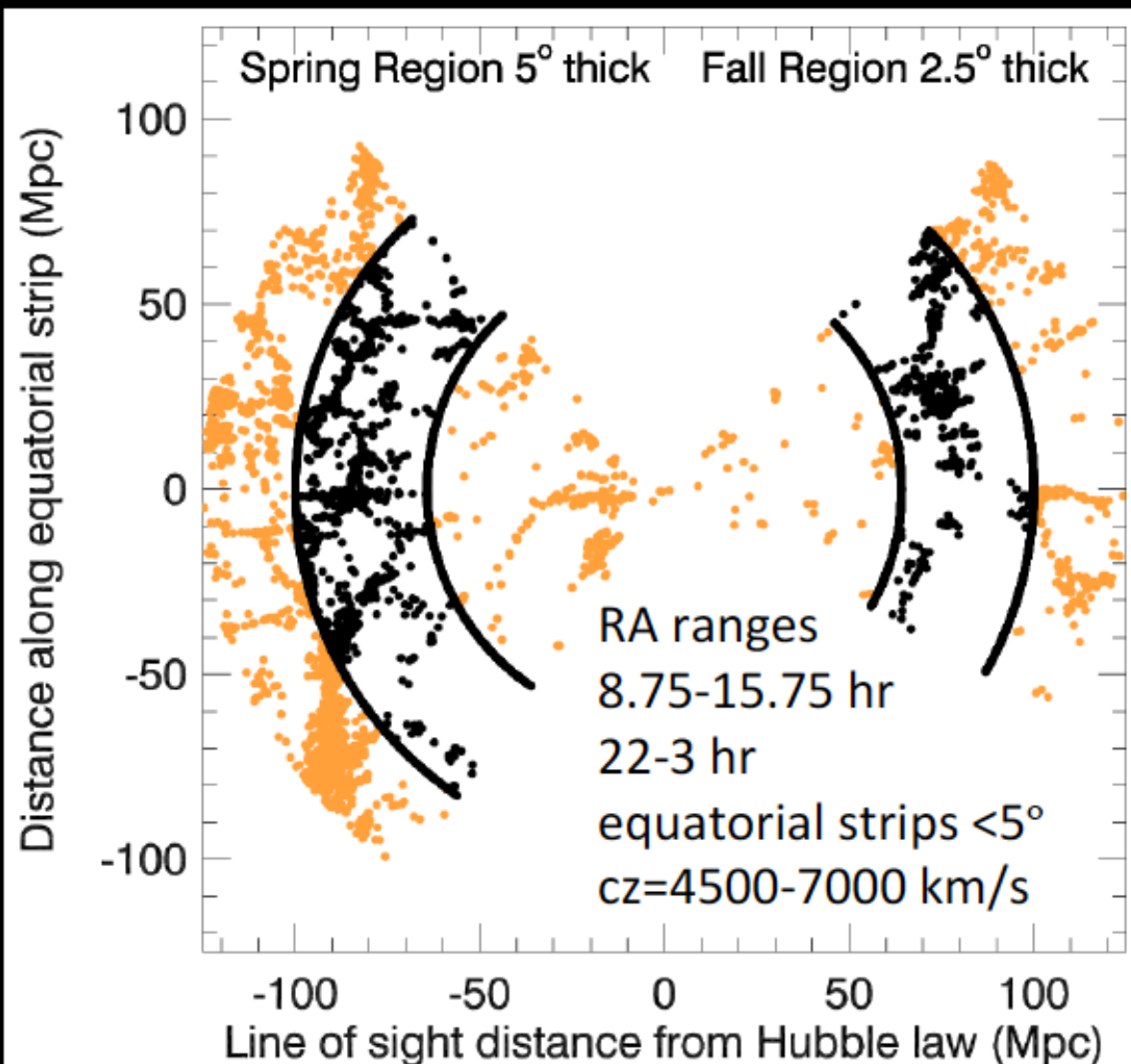


# RESOLVE

## REsolved Spectroscopy Of a Local Volume

PI S. J. Kannappan, UNC



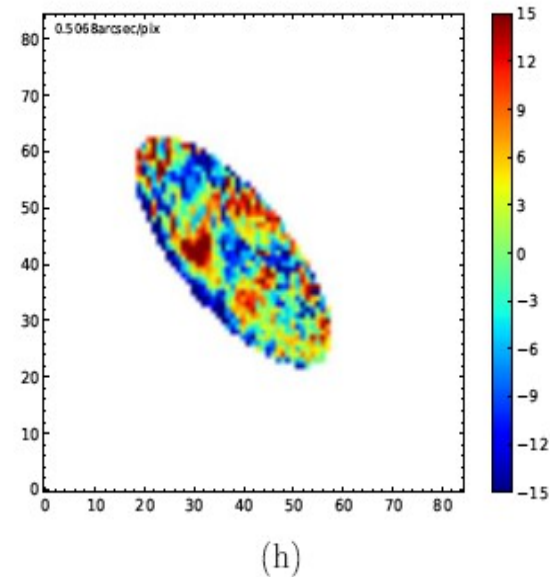
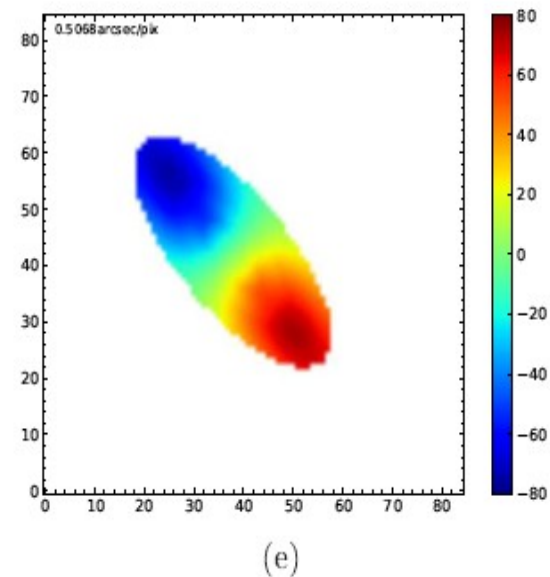
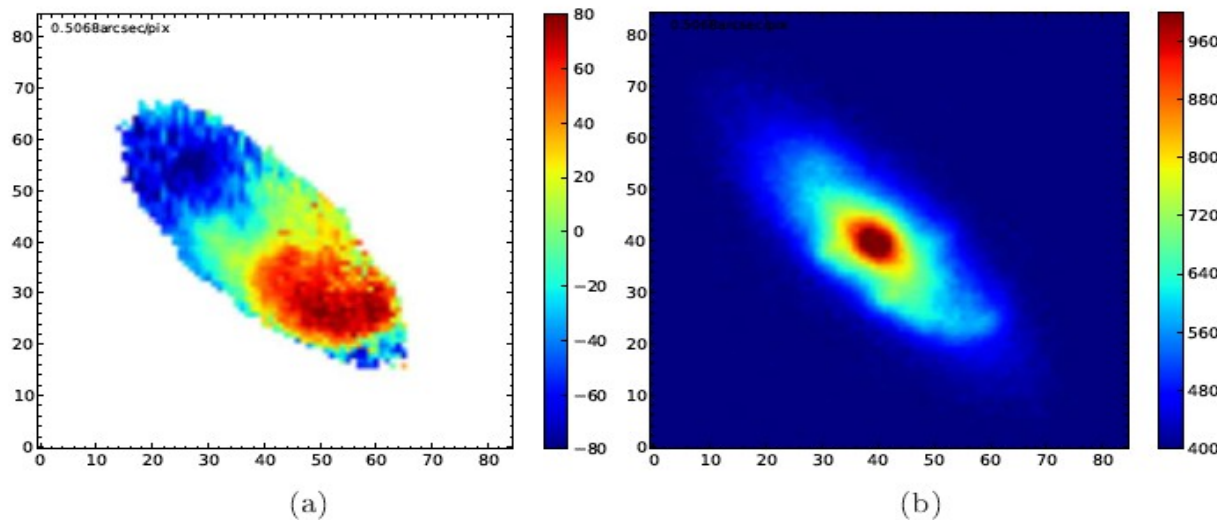
- first large-volume, complete survey of dynamical, stellar, and cold-gas masses from clusters down to dwarfs
- 53,000 cubic Mpc
- baryonic mass limit  $\sim 10^9 M_{\text{sun}}$
- $\sim 1500$  galaxies
- RESOLVED spectroscopy: optical absorption & emission lines

# RESOLVE – The Fabry-Perot data (Liz Naluminsa, Steve Crawford, Petri Vaisanen)

~30 RESOLVE galaxies observed over 2012 and 2013

A learning curve, several problems identified, but eventually producing reasonable data.

**DiskFit** [Spekkens & Sellwood 07] used to fit the RSS/FP velocity maps.

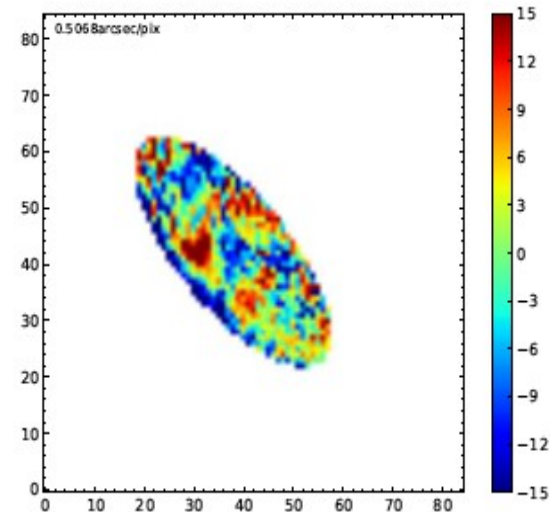
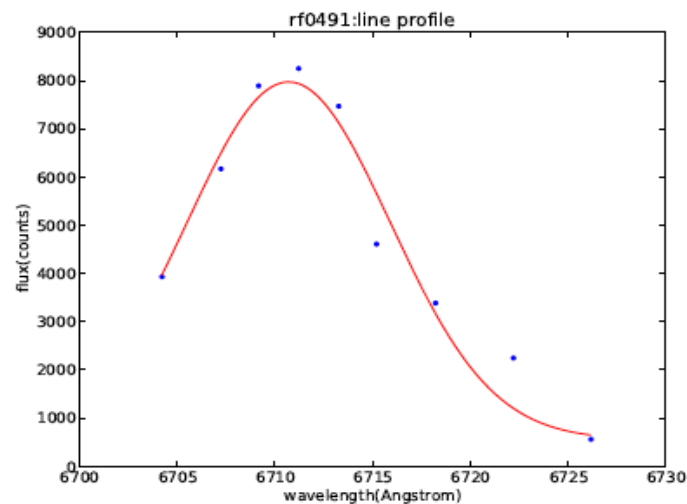
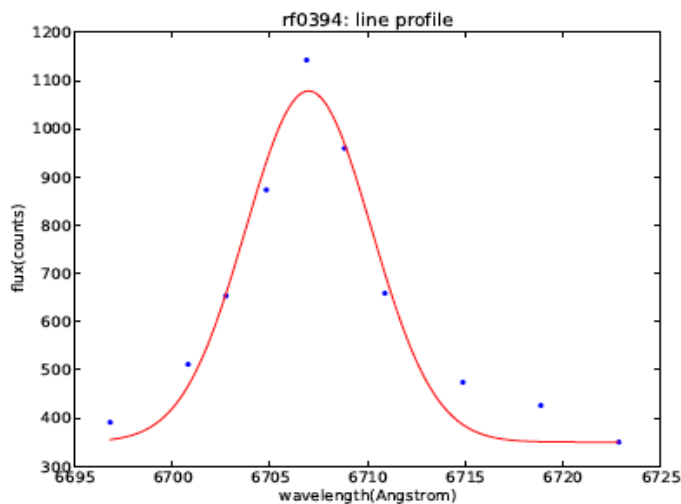
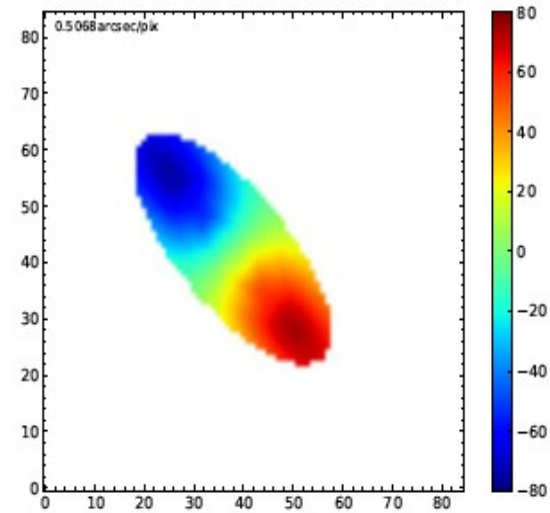


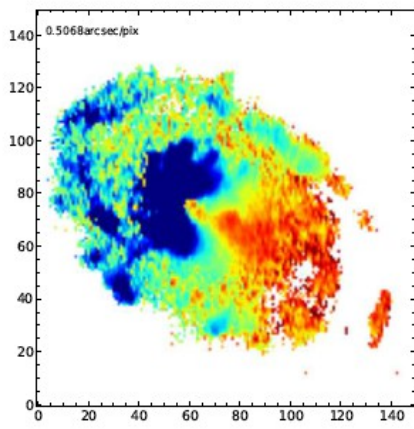
# RESOLVE – The Fabry-Perot data (Liz Naluminsa, Steve Crawford, Petri Vaisanen)

~30 RESOLVE galaxies observed over 2012 and 2013

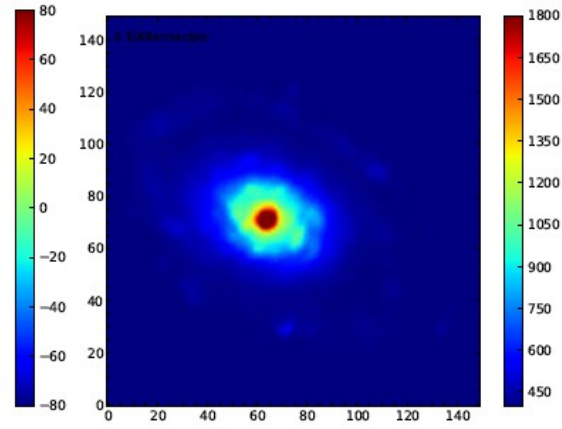
A learning curve, several problems identified, but eventually producing reasonable data.

**DiskFit** [Spekkens & Sellwood 07] used to fit the RSS/FP velocity maps.

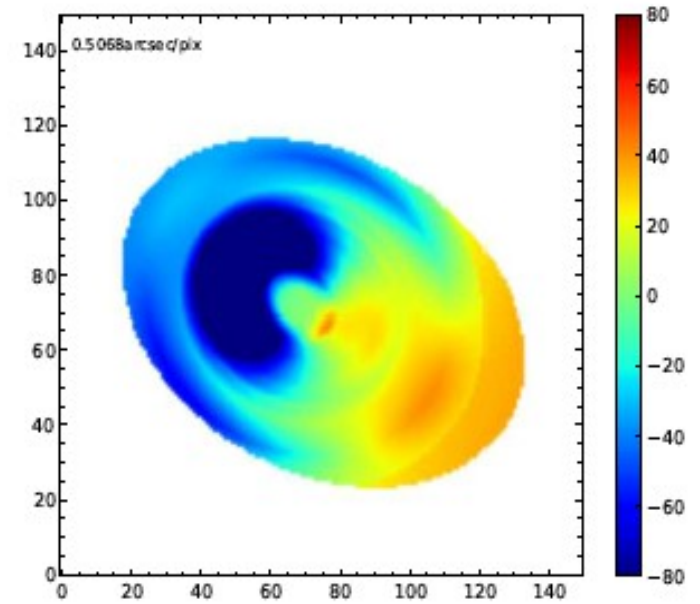




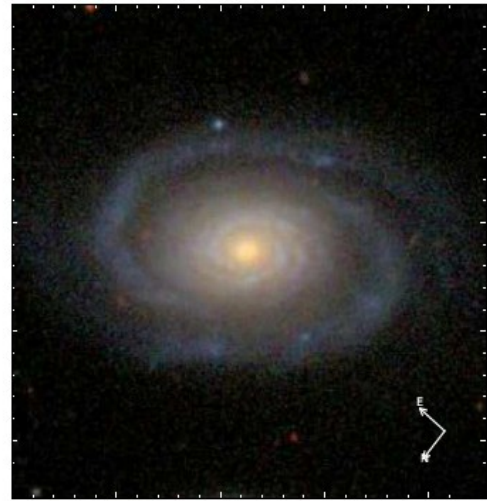
(a)



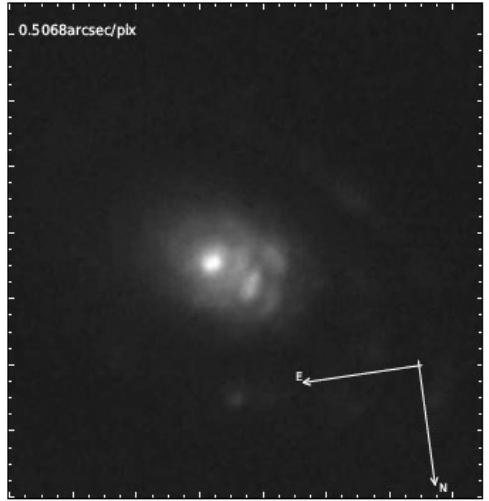
(b)



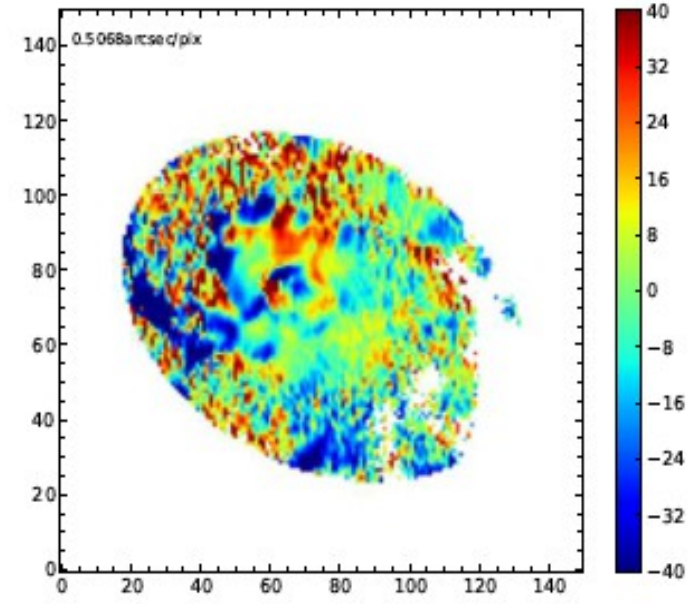
(g)



(c)



(d)



(j)

Rf0394 best fit: Rotation + lop-sided flow model