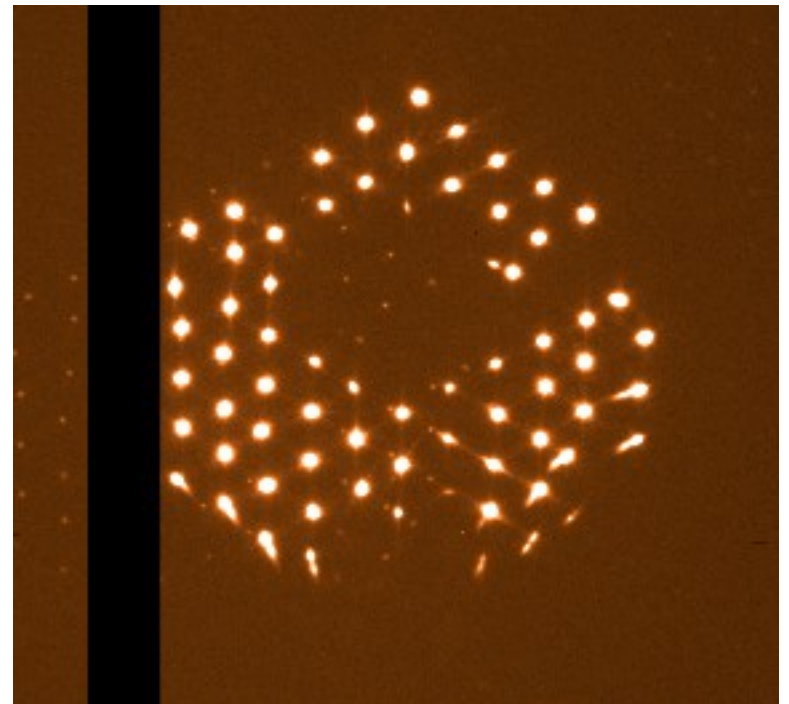
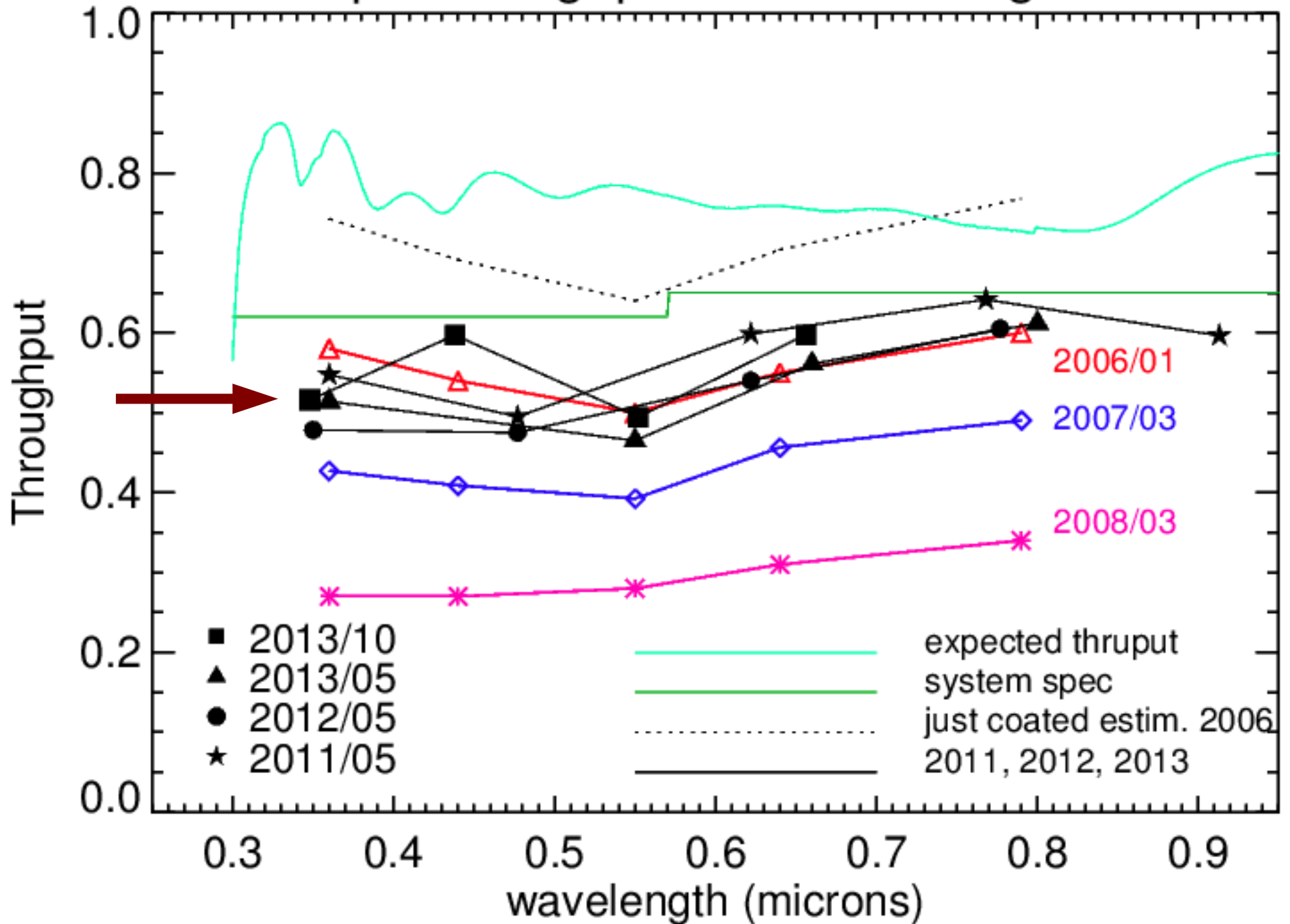


SALT throughput in Oct 2013

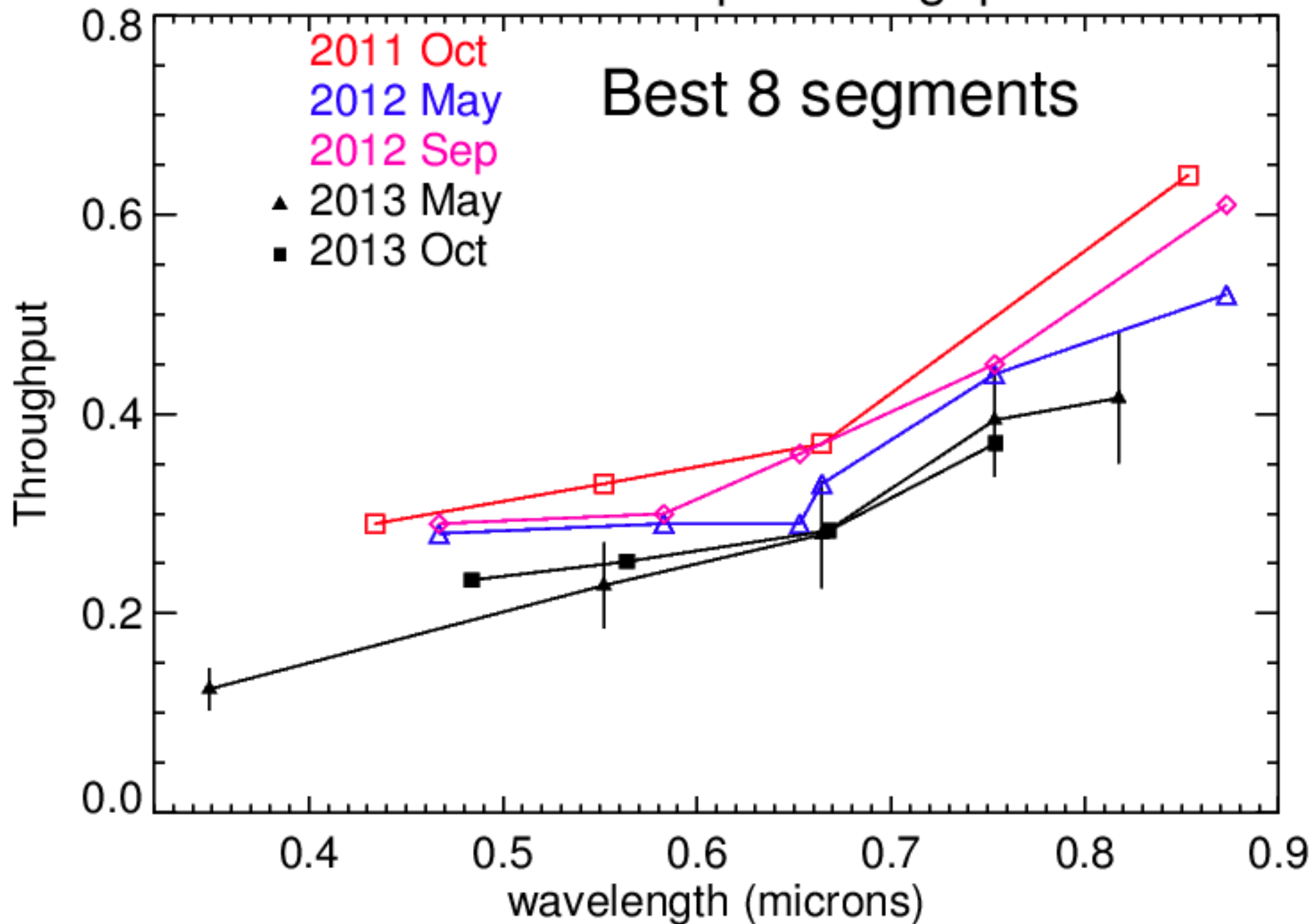
- Test of **telescope throughput** using a burst mirror of a spec.phot.standard and assuming Saltcam optics, filters, fold-mirrors, QEs, are nominal.
- Essentially means the throughput of Primary + SAC + ADC
- RSS+Telescope throughput also measured.
- Compared to previous similar measurements.

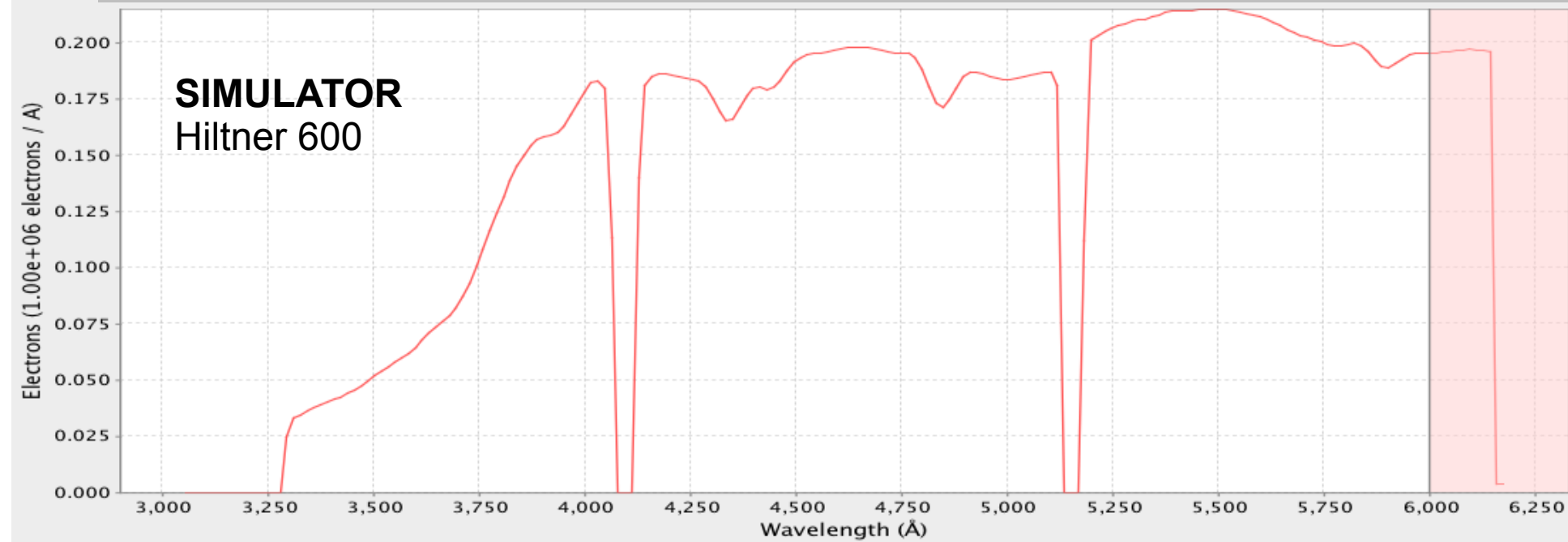
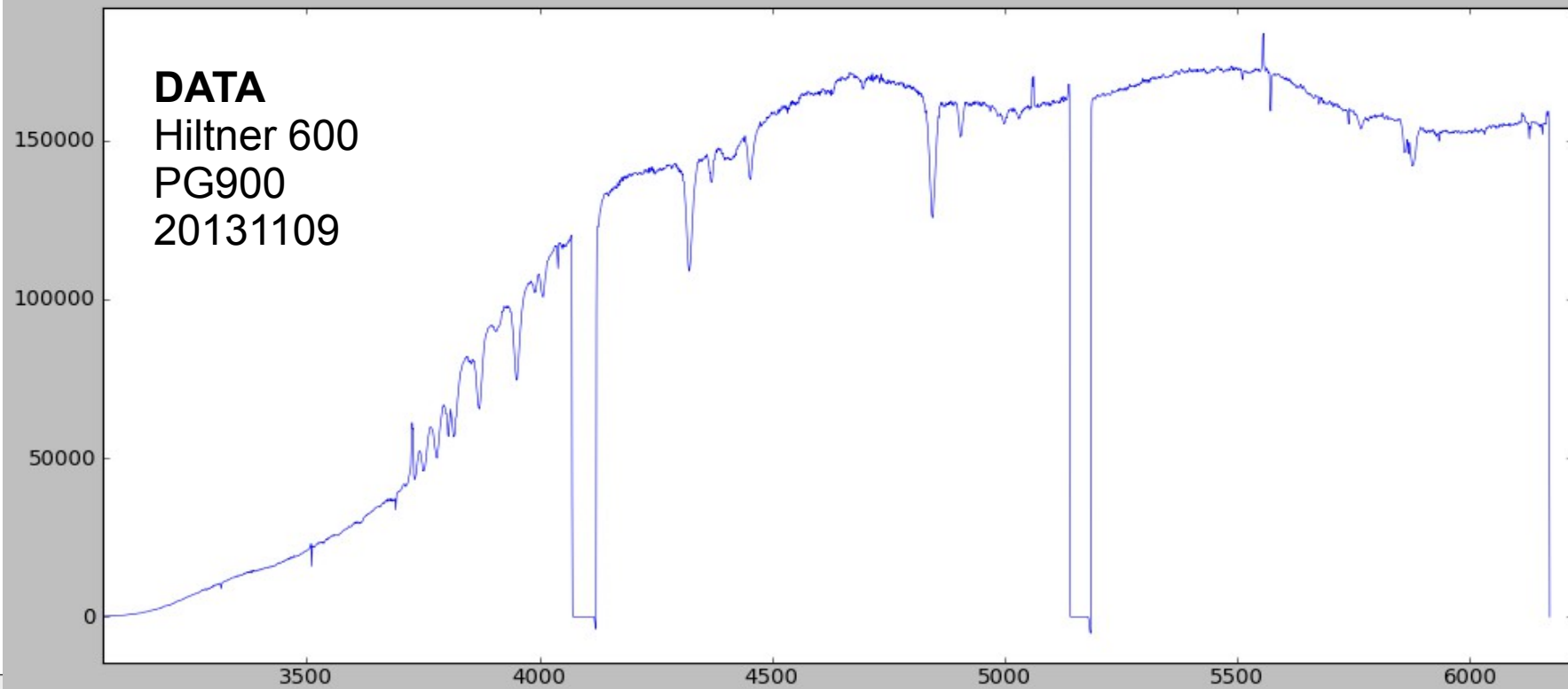


telescope throughput derived using salticam



RSS+Telescope throughput





Simulator reminders

- They do reflect fairly well the true system throughput

However:

- **Image Quality** remains an issue which is difficult to quantify for any given observation. PSFs are not the same as “seeing”.
- **Sky background level** at Sutherland (and/or stray light) is still to be systematically investigated – some evidence for sky electrons being factor of 1.5-2.0 too high compared to RSS simulator. This will affect **faint targets**.